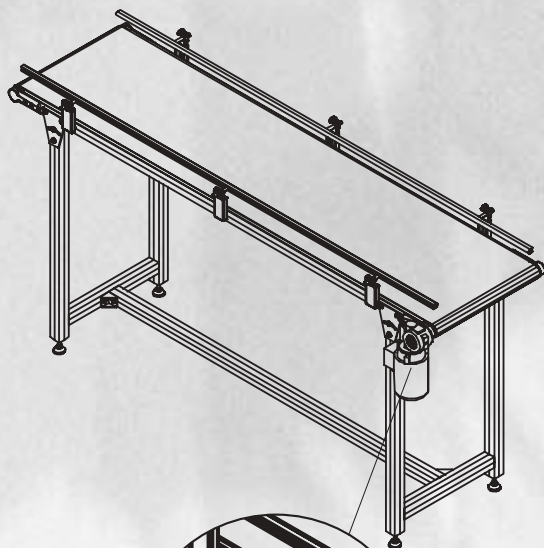




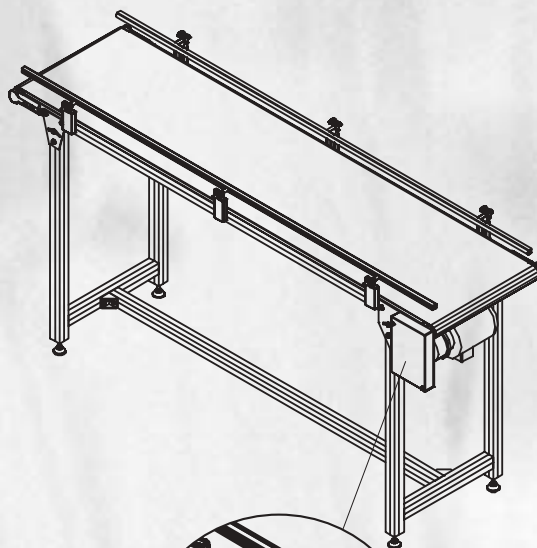
BELT CONVEYOR

The belt conveyor module in our MiniTec CADmenu construction software designs your belt conveyor automatically according to your requirements. Furthermore it calculates the deflection, suggests the number of supports and generates the respective part list - within a few minutes. Assembly can be carried out quickly and easily as a result of our proven components.

Motor arrangement

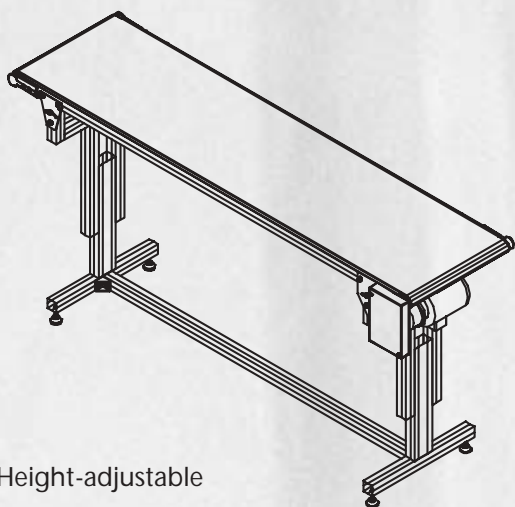


Plug-on motor



Flanged motor

Subconstructions



Height-adjustable



Standard

REQUEST FOR OFFER: BELT CONVEYORS AND ROLLER TRACKS

Standard dimension

Axial distance A mm

Belt width L mm

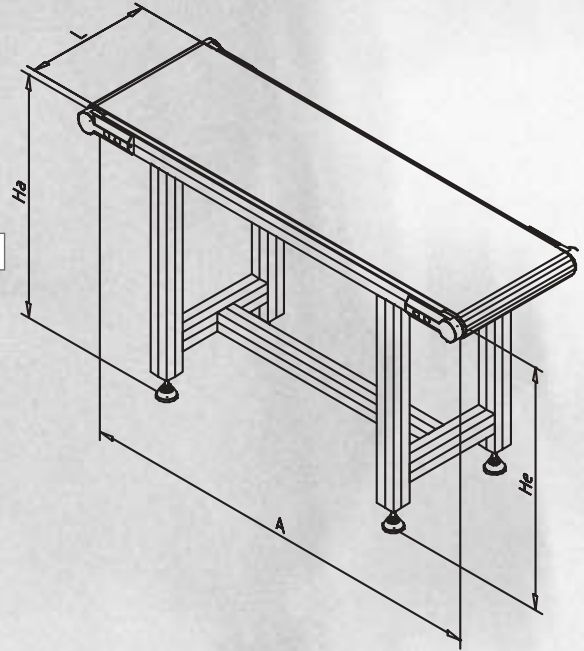
Conditions of usage

Goods to be conveyed

Weight/piece kg

Total belt load kg

Temperature °C



Subconstruction

Charging side height He mm

Discharging side height Ha mm

Number of supports Pcs.

Height adjustable sup. from mm to mm

No. of lateral guide support Pcs. (max. distance: 1000 mm)

Lateral guide one side both sides

Floor anchor Yes No

Rollers Yes No

Feet Yes No

Options

Belt PVC PU

Supporting sheet Aluminium Inox

Drive

Motor arrangement Flanged Plug-on motor

Motor Type Part no.

Speed m/min.

Adjustable speed from m/min. up to m/min.

Company

Please call me back

Name

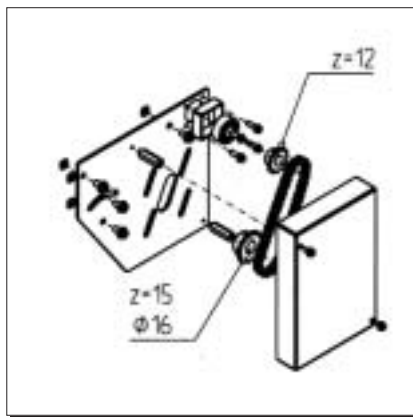
Please send me an offer

Phone no.

Fax no.

MOTOR ATTACHMENT KIT Ø 16

Part N° 29.5030/0



TECHN. DATA/ITEMS SUPPLIED

- Motor plate and cover, steel, powder coated, grey
- Housing with self aligning
- Chain wheel bored for motor-shaft Ø 16
- 2 chain wheels with driving chain
- Fixing kit

Weight 3,060 kg

APPLICATIONS

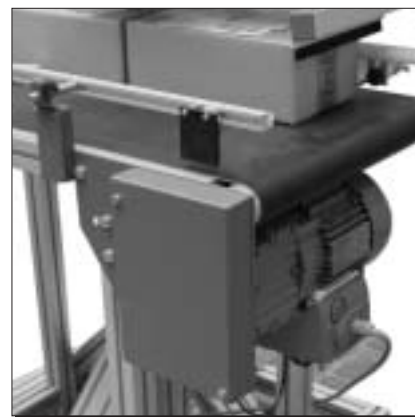
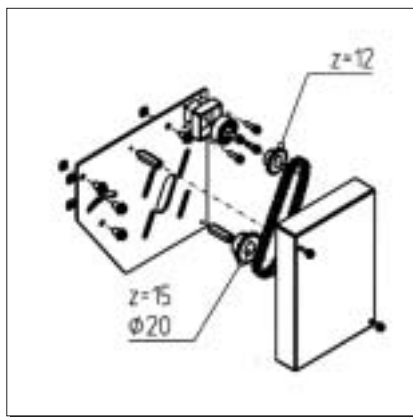
- Belt-conveyors made of MiniTec aluminium profiles
- Suitable for attachment of spur wheel back-geared motors; flange Ø 120 mm
- Belt driving cylinder Part N° 29.5022/0 and belt tensioning cylinder Part N° 21.0994/0

ASSEMBLY

- Screw flange plate on basic frame; mount housing with bearing
- Insert belt driving cylinder; on the opposite side use conveyor bearing Part N° 21.0993/0
- Mount motor and chain wheels and tension chain
- Mount cover

MOTOR ATTACHMENT KIT Ø 20

Part N° 29.5031/0



TECHN. DATA/ITEMS SUPPLIED

- Motor plate and cover, steel, powder coated, grey
- Housing with self aligning
- Chain wheel bored for motor-shaft Ø 16
- 2 chain wheels with driving chain
- Fixing kit

Weight 3,060 kg

APPLICATIONS

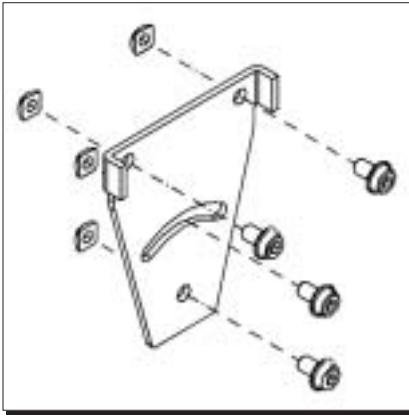
- Belt-conveyors made of MiniTec aluminium profiles
- Suitable for attachment of spur wheel back-geared motors; flange Ø 120 mm
- Belt driving cylinder Part N° 29.5022/0 and belt tensioning cylinder Part N° 21.0994/0

ASSEMBLY

- Screw flange plate on basic frame; mount housing with bearing
- Insert belt driving cylinder; on the opposite side use conveyor bearing Part N° 21.0993/0
- Mount motor and chain wheels and tension chain
- Mount cover

SWIVEL PLATE

Part N° 29.5001/0



TECHN. DATA/ITEMS SUPPLIED

- Steel, powder coated, grey
- Fixing kit

Weight 0,377 kg

APPLICATIONS

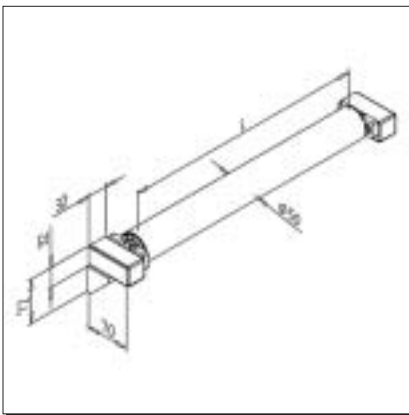
- Attachment of the subconstruction on MiniTec belt conveyor
- Also suitable for inclined belt conveyors
- The swivel plate is also used as a counterbearing to tighten the belt
- Range: $\pm 35^\circ$

ASSEMBLY

- Fasten at the conveyor profiles at the subconstruction with fixing kit from supply schedule

SUPPORT ROLLER KIT

Part N° 29.5002/0



TECHN. DATA/ITEMS SUPPLIED

- Support roller kit, PVC
- Ball bearings on both sides
- Two profile supports
- 2 mounting angles
- Fixing kit

Weight 0,487 kg

Please specify dimension L (belt width)

APPLICATIONS

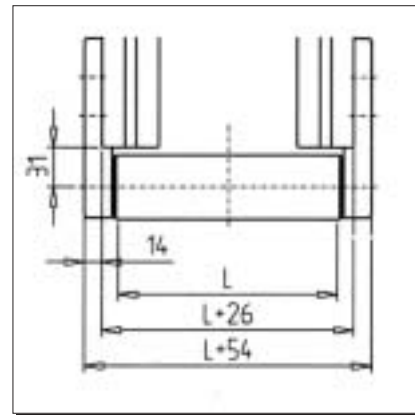
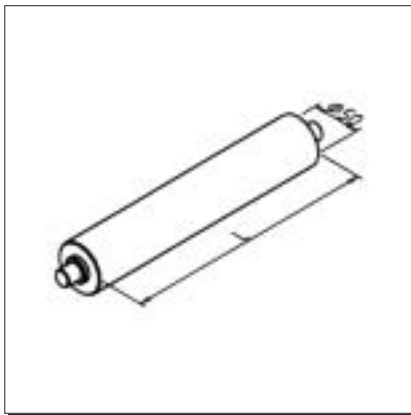
- MiniTec belt conveyor systems
- As a support for the lower side of long belt conveyors
- We recommend to install one support roller for each intermediate support on the belt conveyor
- Use this support roller kit only with belt width > 115 mm

ASSEMBLY

- Preassemble the profile roller support on the conveyor supports; use the angles
- Clip the support roller in fixing kit
- Slide the roller in appropriate position and tighten the screws

BELT TENSIONING CYLINDER 45

Part N° 21.0994/0



TECHN. DATA/ITEMS SUPPLIED

- Aluminium
 - Turned spherically
 - Journal \varnothing 17
- Weight 4,800 kg/m
- Please specify dimension L (belt width)

APPLICATIONS

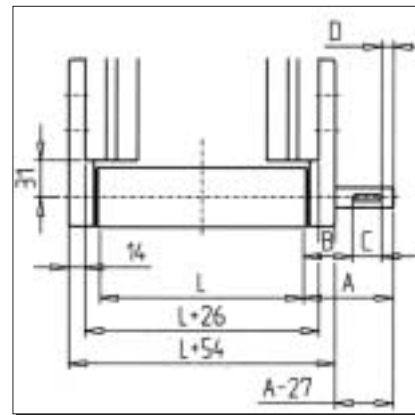
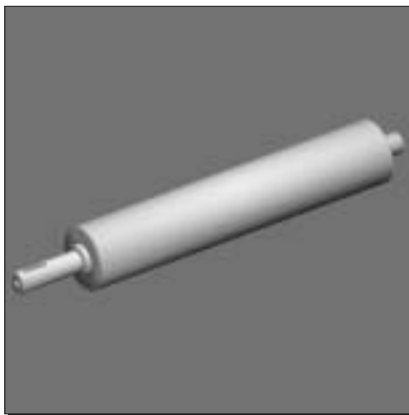
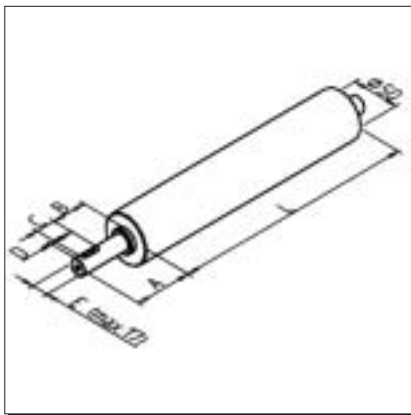
- MiniTec belt conveyor systems
- Use suitable conveyor bearing Part N° 21.0993/0

ASSEMBLY

- Insert the axle in the conveyor bearing assembly bore
- The cylinder is fixed axially by the self-aligning ball bearings
- The self-aligning ball bearings compensate light misalignments

BELT DRIVING CYLINDER 45

Part N° 21.0995/0



TECHN. DATA/ITEMS SUPPLIED

- Steel, zinc-plated
 - Turned spherically
 - Journal max. \varnothing 17
- Weight 15,300 kg/m
- Please indicate belt width L and dimensions A, B, C, D and E (if < 17 mm)

APPLICATIONS

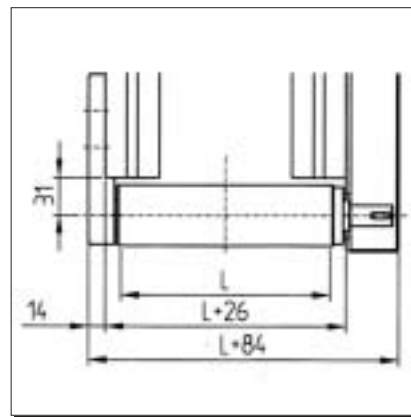
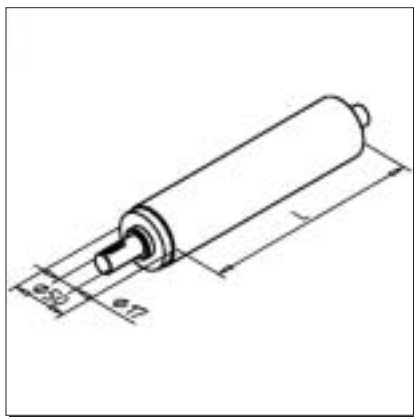
- MiniTec belt conveyor systems
- Use suitable conveyor bearing Part N° 21.0993/0

ASSEMBLY

- Insert belt driving cylinder in conveyor bearing with bore Part N° 21.0993/1
- Mount on opposite conveyor bearing Part N° 21.0993/0
- The self-aligning ball bearings compensate light misalignments

BELT DRIVING CYLINDER 45 FOR MOTOR KIT

Part N° 29.5022/0



TECHN. DATA/ITEMS SUPPLIED

- Steel, zinc-plated
- Turned spherically
- Axle \varnothing 17, driving side suitable for fastening the chain wheel of motor attachment kit

Weight 15,300 kg/m

Please specify dimension L (belt width)

APPLICATIONS

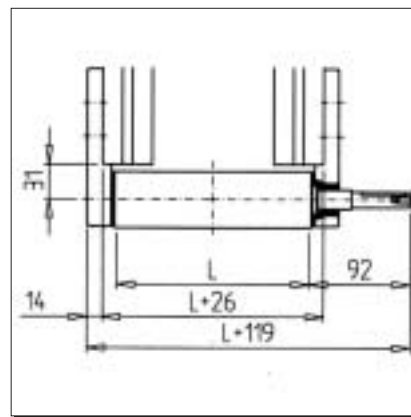
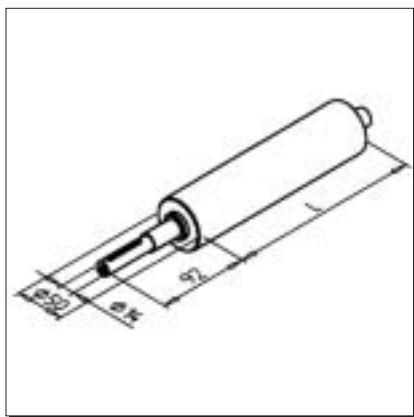
- Can only be used with the MiniTec belt conveyor kit Part N° 29.5030/0 or Part N° 29.5031/0

ASSEMBLY

- Insert the belt driving cylinder in the bearing housing on the motor side
- Mount the conveyor bearing Part N° 21.0993/0 on the opposite side
- The self-aligning ball bearings compensate light misalignments

BELT DRIVING CYLINDER 45 FOR PLUG-ON MOTOR

Part N° 29.5023/0



TECHN. DATA/ITEMS SUPPLIED

- Steel zinc-plated
- Turned spherically
- Axle \varnothing 14, driving side suitable for fastening the plug-on motor

Weight 15,300 kg/m

Please specify dimension L (belt width)

APPLICATIONS

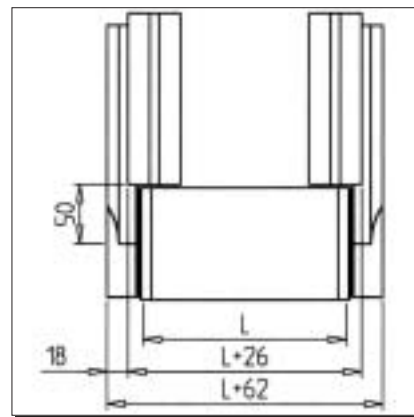
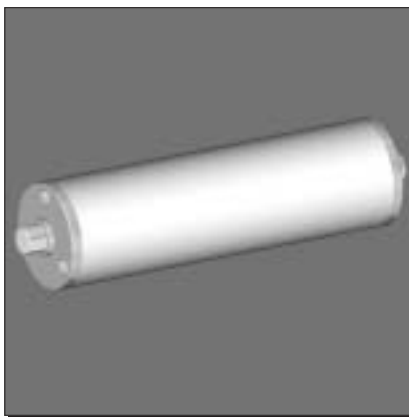
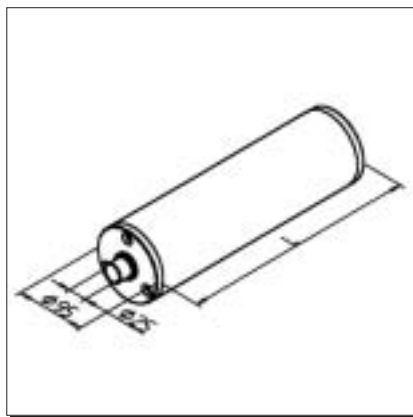
- MiniTec belt conveyor systems DSGM with torque support
- Suitable for MiniTec plug-on motor with torque support

ASSEMBLY

- Insert the belt driving cylinder in the conveyor bearing for plug-on motor Part N° 29.5029/0
- Mount the conveyor bearing Part N° 21.0993/0 on the opposite side

BELT TENSIONING CYLINDER 90

Part N° 21.0982/0



TECHN. DATA/ITEMS SUPPLIED

- Aluminium with shaft made of steel
 - Turned spherically
 - Axle \varnothing 25
- Weight 15,800 kg/m
- Please specify dimension L (belt width)

APPLICATIONS

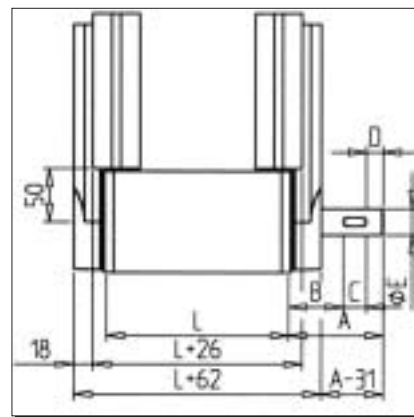
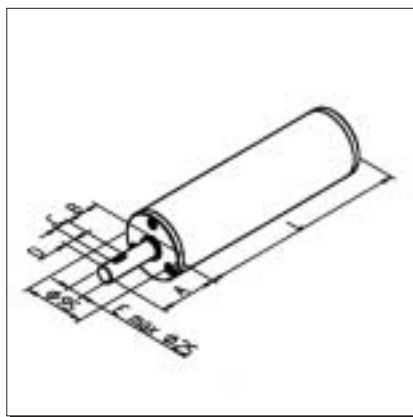
- MiniTec belt conveyor systems
- Use suitable conveyor bearing Part N° 21.0985/00

ASSEMBLY

- Insert axes in the bore of the self-aligning bearings of the conveyor bearing
- The cylinder is fixed axially by the self-aligning ball bearings
- The self-aligning ball bearings compensate light misalignments

BELT DRIVING CYLINDER 90

Part N° 21.0981/0



TECHN. DATA/ITEMS SUPPLIED

- Aluminium with shaft made of steel
 - Turned spherically
 - Axle max. \varnothing 25
- Weight 16,200 kg/m
- Please indicate belt width L and dimensions A, B, C, D and E (if < 25 mm)

APPLICATIONS

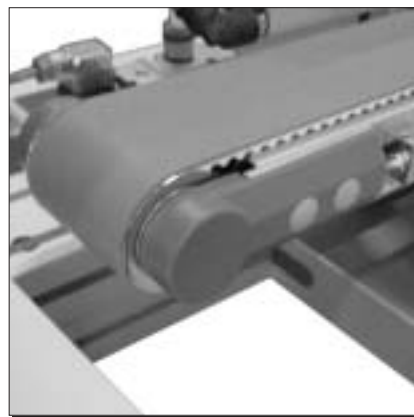
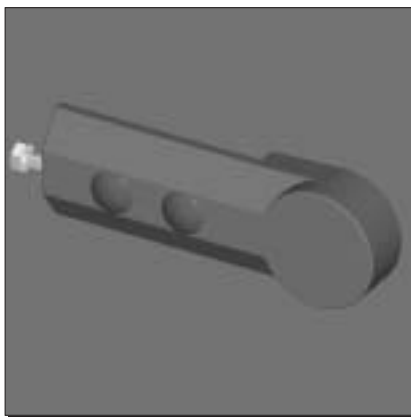
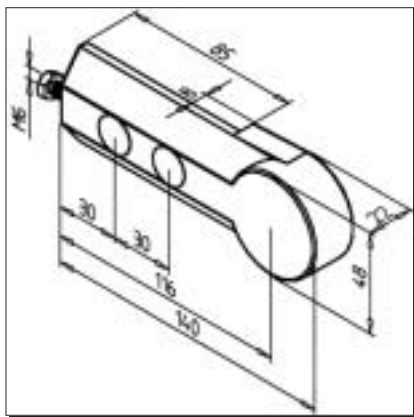
- MiniTec belt conveyor systems
- Use suitable conveyor bearing Part N° 21.0985/0 and Part N° 21.0985/1

ASSEMBLY

- Insert belt driving cylinder in conveyor bearing with bore Part N° 21.0985/10
- Mount on opposite conveyor bearing Part N° 21.0985/00
- The self-aligning ball bearings compensate light misalignments

CONVEYOR BEARING 45

Part N° 21.0993/0



TECHN. DATA/ITEMS SUPPLIED

- Aluminium GD, powder coated, grey
- Self-aligning ball bearing with $\varnothing 17$ mm, both sides sealed

Weight 0,275 kg

Please specify dimension L (belt width)

APPLICATIONS

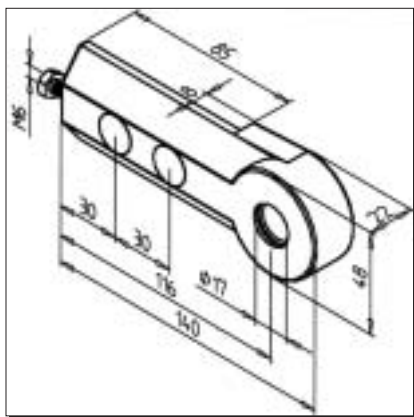
- Bearing for belt-tensioning cylinders

ASSEMBLY

- Pretighten at the profile groove
- If swivel plates **Part N° 29.5001/0** for support fastening are used, they serve as counter bearing for tightening purpose; if not, use multi block or angles
- Tighten the conveyor belt by unscrewing the set screw, if necessary reset the tool as often as needed
- Firmly tighten the conveyor bearing
- Recommended locking torque: 25 Nm

CONVEYOR BEARING 45 WITH BORE

Part N° 21.0993/1



TECHN. DATA/ITEMS SUPPLIED

- Aluminium GD, powder coated, grey
- With bore for shaft end (add on motor)
- Self-aligning ball bearing with bore $\varnothing 17$ mm, both sides sealed

Weight 0,268 kg

APPLICATIONS

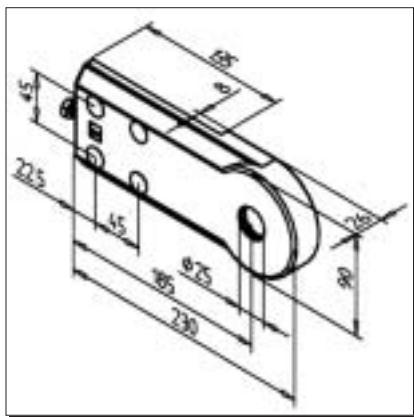
- Bearing for belt-tensioning cylinders
- Attachmant of plug-on motors or chain wheels on shafts; max. $\varnothing 17$ mm

ASSEMBLY

- Pretighten at the profile groove
- If swivel plates **Part N° 29.5001/0** for support fastening are used, they serve as counter bearing for tightening purpose; if not, use multiblocks or angles
- Tighten the conveyor belt by unscrewing the set screw, if necessary reset the tool as often as needed
- Firmly tighten the conveyor bearing
- Recommended locking torque: 25 Nm

CONVEYOR BEARING 90 WITH BORE

Part N° 21.0985/1



TECHN. DATA/ITEMS SUPPLIED

- Aluminium GD, powder coated, grey
 - With bore for shaft end (add on motor)
 - Self-aligning ball bearing with bore \varnothing 25 mm, both sides sealed
- | | |
|--------|----------|
| Weight | 0,900 kg |
|--------|----------|

APPLICATIONS

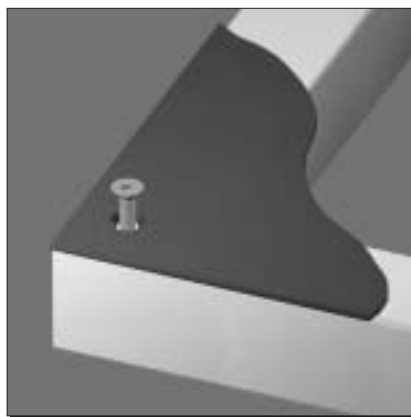
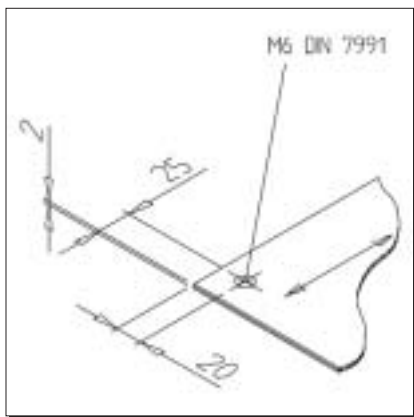
- Bearing of belt driving cylinders in MiniTec belt-conveyors
- Attachment of motors, chain wheels or belt pulleys on shaft, \varnothing max 25 mm

ASSEMBLY

- Preassemble conveyor bearing on profile end
- As counter bearing for tightening use connecting plate 32 x 90 or 45 x 90
- Tighten the conveyor belt by unscrewing the set screw, if necessary reset the tool as often as needed
- Firmly tighten the conveyor bearing
- Recommended locking torque: 25 Nm

SUPPORTING SHEET

Part N° 29.5010/0



TECHN. DATA/ITEMS SUPPLIED

- Aluminium, anodized
 - Thickness: 2 mm
 - bored, ready for use
- | | |
|--------|-------------------------|
| Weight | 5,400 kg/m ² |
|--------|-------------------------|

APPLICATIONS

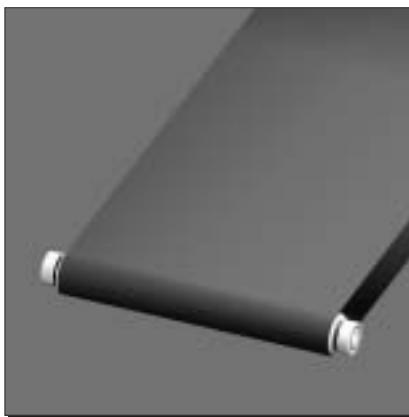
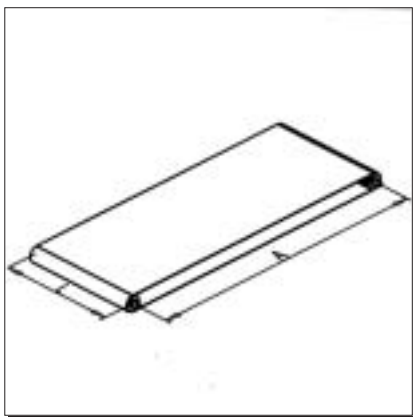
- Support for conveyor belts
- For MiniTec conveyor systems

ASSEMBLY

- Screw with counter sunk screws M6 x 16 and square nut M6 on profile

CONVEYOR BELT PVC

Part N° 29.5014/0



TECHN. DATA/ITEMS SUPPLIED

- PVC, black

Please specify dimension L (belt width)
and dimension EL (endless length)

APPLICATIONS

- For MiniTec belt conveyor systems
- High performance conveyor belts, seamless welded
- Special designs possible upon request: e.g. picking surface, struts etc.

- Pull belt over belt driving cylinder and belt tensioning cylinder

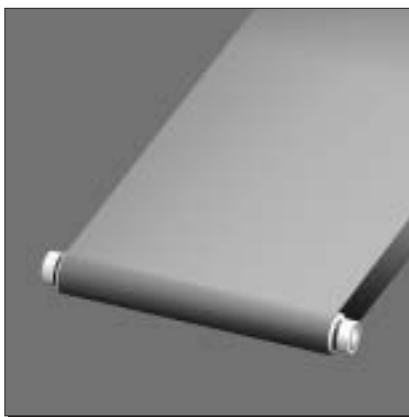
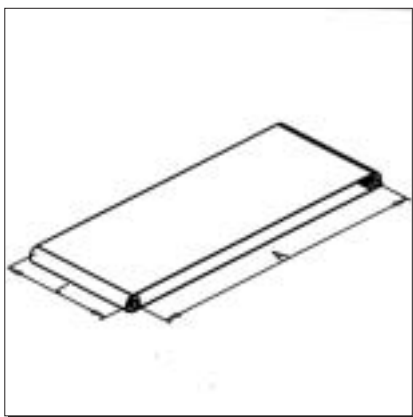
- Mount belt tensioning cylinder and belt driving cylinder and tighten belt

Calculation of endless length EL:

- For cylinder 45: $EL = 2 \times A + 165 \text{ mm}$
- For cylinder 90: $EL = 2 \times A + 305 \text{ mm}$

CONVEYOR BELT PU

Part N° 29.5015/0



TECHN. DATA/ITEMS SUPPLIED

- PU, blue

Please specify dimension L (belt width)
and dimension EL (endless length)

APPLICATIONS

- For MiniTec belt conveyor systems
- High performance conveyor belts, seamless welded
- Special designs possible upon request: e.g. picking surface, struts, etc.

- Pull belt over belt driving cylinder and belt tensioning cylinder

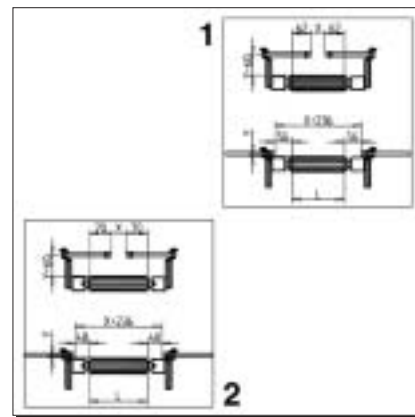
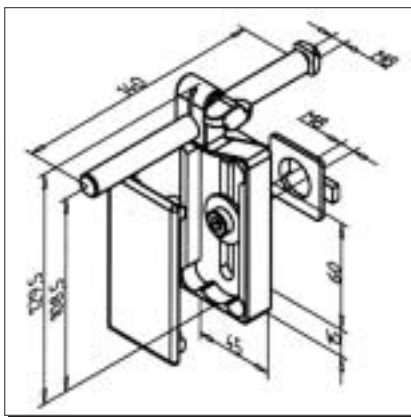
- Mount belt tensioning cylinder and belt driving cylinder and tighten belt

Calculation of endless length EL:

- For cylinder 45: $EL = 2 \times A + 165 \text{ mm}$
- For cylinder 90: $EL = 2 \times A + 305 \text{ mm}$

LATERAL GUIDE SUPPORT 140

Part N° 29.5028/0



TECHN. DATA/ITEMS SUPPLIED

- PA 6 GF, grey
- Distance bolt, stainless steel
- Securing against torsion AL GD
- Fixing kit

Weight	0,142 kg
--------	----------

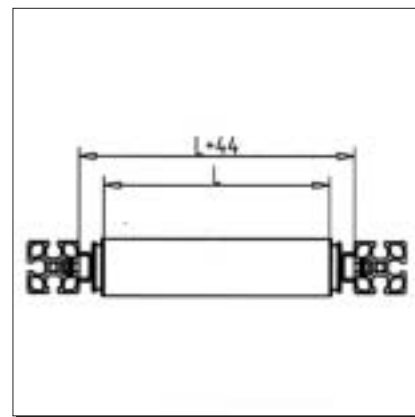
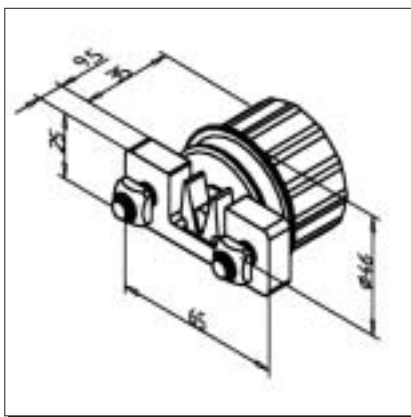
APPLICATIONS

- Adjustable lateral guides for MiniTec belt conveyors
- Other designs on request
- We recommend: approx. 500 mm distance between the supports

- Fasten support on lateral profiles
- Set the height H and tighten the screws
- Mount the lateral guide Part N° 29.5024/0
- Adjust lateral distance bolt

BEARING ASSEMBLY FOR TRANSPORT ROLLERS

Part N° 21.1056/0



TECHN. DATA/ITEMS SUPPLIED

- Housing PA with slide-bearing
- Axle bolt, steel
- Roller support, PA 6
- Fixing kit
- For transport rollers of 60 - 1000 mm

Weight	0,420 kg
Load max. (roller)	20 kg

APPLICATIONS

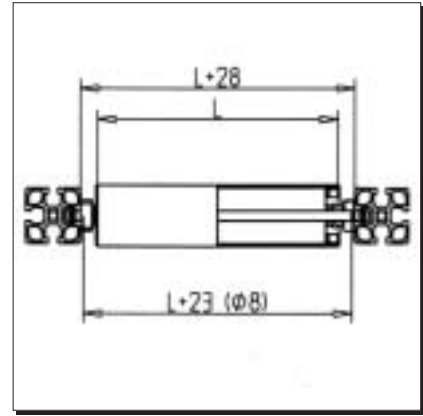
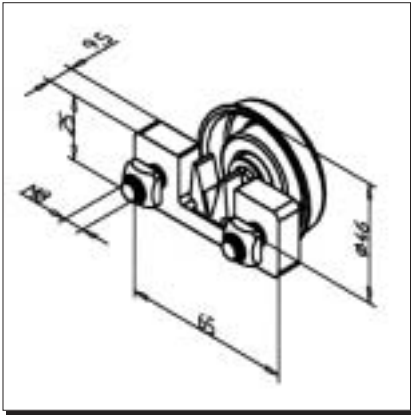
- Roller conveyors at any length
- Drive via round belt Ø 5 mm possible
- The rollers can be replaced individually

ASSEMBLY

- Attachment of the roller support on all profiles possible
- Mount roller support
- Press bearing assembly into the tube
- Insert axle bolt
- Clip in transport roller

BEARING ASSEMBLY S

Part N° 21.1722/0



TECHN. DATA/ITEMS SUPPLIED

- Housing steel with ball bearing
- Securing clip, steel
- Roller support, PA 6
- Fixing kit
- For transport rollers of 60 - 1000 mm

Weight	0,420	kg
Load max. (roller)	33	kg

APPLICATIONS

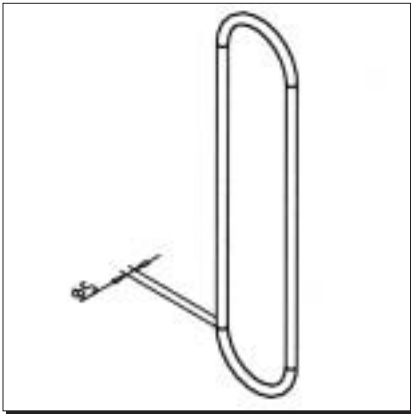
- Roller conveyors at any length
- The rollers can be replaced individually

ASSEMBLY

- Attachment of the roller support on all profiles possible
- Mount roller carrier
- Press bearing assembly into the tube
- Insert shaft Ø 8 and secure with securing clip
- Clip in transport roller

DRIVING BELT PU

Part N° 21.1050/7



TECHN. DATA/ITEMS SUPPLIED

- PU, green
- Ø = 5 mm
- Length = 550 mm

APPLICATIONS

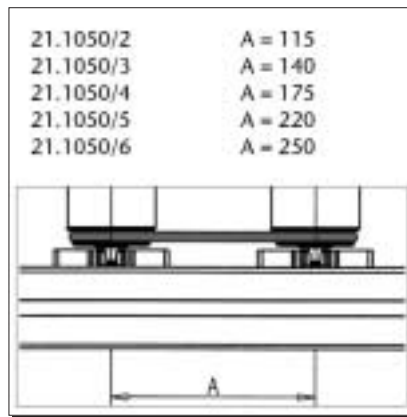
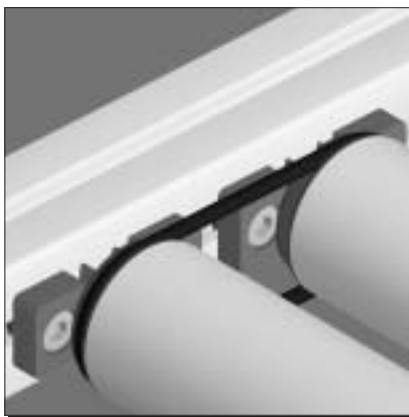
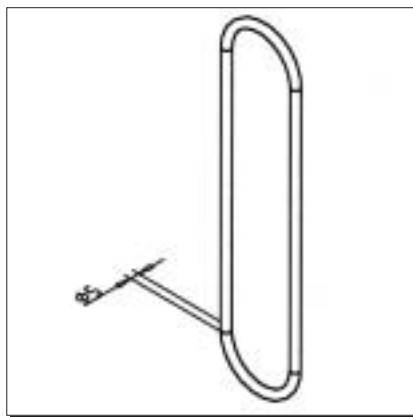
- Drive of transport rollers via groove in bearing assembly
- Usable with bearing-assembly only **Part N° 21.1056/0**

ASSEMBLY

- Strip driving belt over driving shaft
- Lay driving belt in groove of transport roller
- Bind rollers at insufficient places with driving belt NBR **Part N° 21.1050/1** to **Part N° 21.1050/6**; see page 301
- Clip roller in roller support

DRIVING BELT NBR

Part N° 21.1050/1



TECHN. DATA/ITEMS SUPPLIED

- NBR, black
- Ø = 5 mm
- A = 80 mm

For other length see selection table on the right

APPLICATIONS

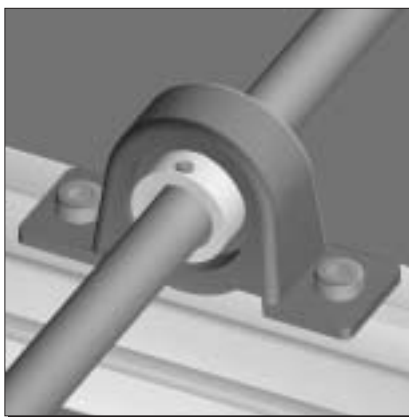
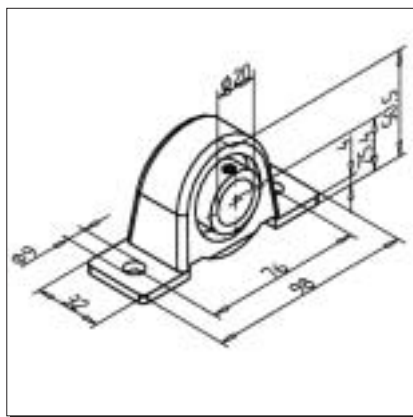
- Attachment of transport rollers at insufficient places via groove in bearing assembly from roller to roller

ASSEMBLY

- Insert belt in groove of the first roller and clip roller in the bearing
- Strip belt over second roller and clip in roller support

SUPPORT BEARING 20

Part N° 50.0128/0



TECHN. DATA/ITEMS SUPPLIED

- Pillow block, steel, zinc-plated
- Fixing kit
- Bore Ø 20 mm

Load:
dyn. C 975 N

Weight 0,190 kg

APPLICATIONS

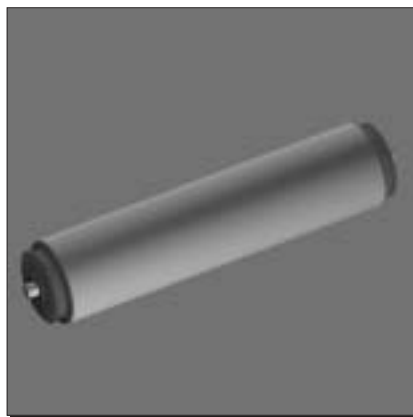
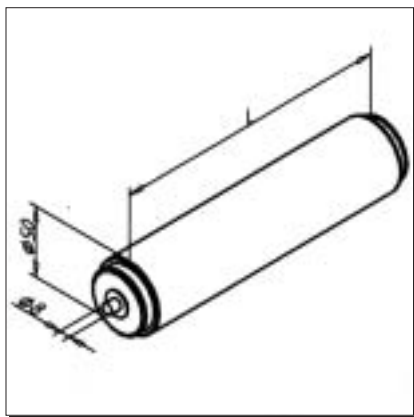
- Driving of roller-conveyors with driving belts

ASSEMBLY

- With fixing kit from supply schedule
- Lead shaft trough bearing and secure with set screw

TRANSPORT ROLLER PVC

Part N° 21.1717/0



TECHN. DATA/ITEMS SUPPLIED

- Completely mounted transport roller, PVC-tube

Please indicate dimension L

APPLICATIONS

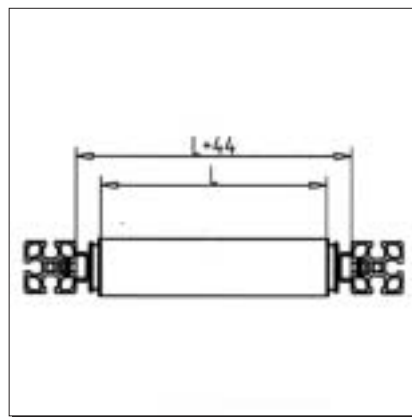
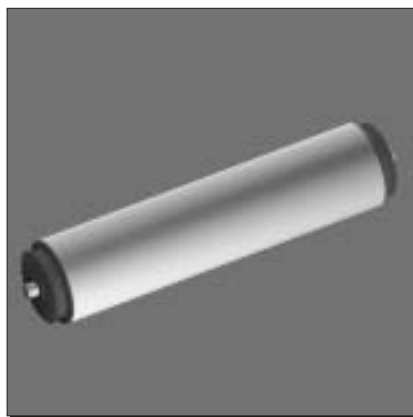
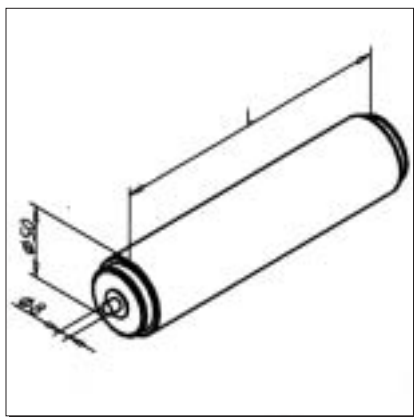
- Producing of roller conveyors with or without drive
- Drive possible via driving belt Ø 5mm
- The rollers can be replaced individually

ASSEMBLY

- Clip in roller support
- As roller support we recommend door catch Part N° 21.1756/1

TRANSPORT ROLLER AL

Part N° 21.1716/0



TECHN. DATA/ITEMS SUPPLIED

- Transport roller completely assembled, Alu-tube

Please indicate dimension L

APPLICATIONS

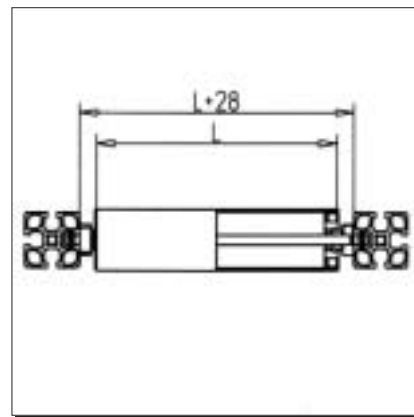
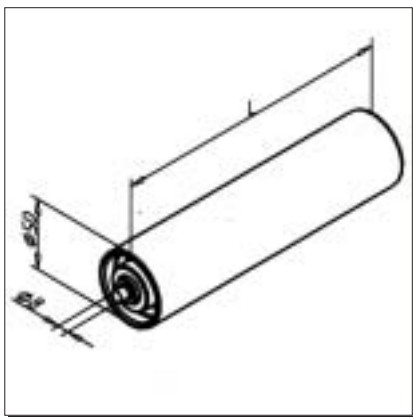
- Producing of roller conveyors with or without drive
- Drive possible via driving belt Ø 5mm
- The rollers can be replaced individually

ASSEMBLY

- Clip in roller support
- As roller support we recommend door catch Part N° 21.1756/1

TRANSPORT ROLLER S PVC

Part N° 21.1719/0



TECHN. DATA/ITEMS SUPPLIED

- Transport roller completely assembled, PVC-tube

- With ball bearings and shaft

Please indicate dimension L

APPLICATIONS

- Producing of roller conveyors without drive

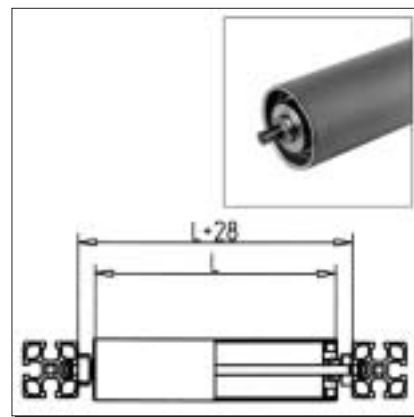
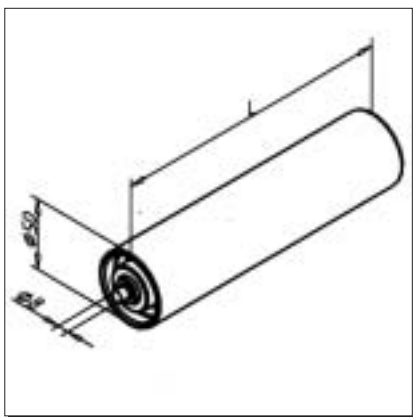
ASSEMBLY

- Clip in roller support

- As roller support we recommend door catch Part N° 21.1756/1

TRANSPORT ROLLER S AL

Part N° 21.1718/0



TECHN. DATA/ITEMS SUPPLIED

- Transport roller completely assembled, Alu-tube

- With ball bearings and shaft

Please indicate dimension L

APPLICATIONS

- Producing of roller conveyors without drive

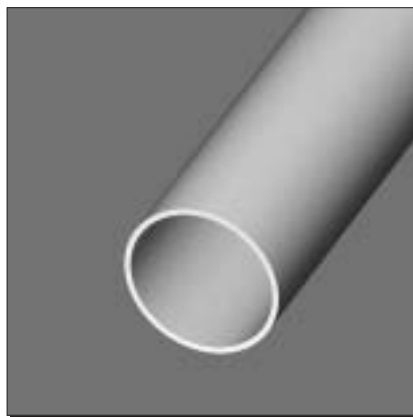
ASSEMBLY

- Clip in roller support

- As roller support we recommend door catch Part N° 21.1756/1

TUBE AL 50 X 2

Part N° 20.1041/0



TECHN. DATA/ITEMS SUPPLIED

- AlMgSi 0,5 F22, natural
- Recommended tube length: max. 1000 mm

Weight	0,820	kg/m
Length	6	m

Please indicate desired tube length

APPLICATIONS

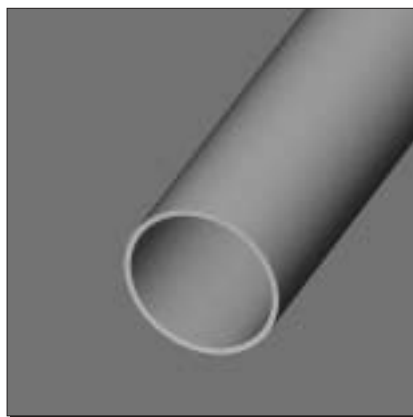
- Transport rollers at any length for driven or non-driven roller conveyors

ASSEMBLY

- Use bearing assembly S Part N° 21.1722/0 or bearing assembly for transport roller Part N° 21.1056/0

TUBE PVC 50 X 2

Part N° 20.1050/0



TECHN. DATA/ITEMS SUPPLIED

- PVC, blue
- Recommended tube length: max. 1000 mm

Weight	0,420	kg/m
Length	3	m

Please indicate desired tube length

APPLICATIONS

- Transport rollers at any length for driven or non-driven roller conveyors

ASSEMBLY

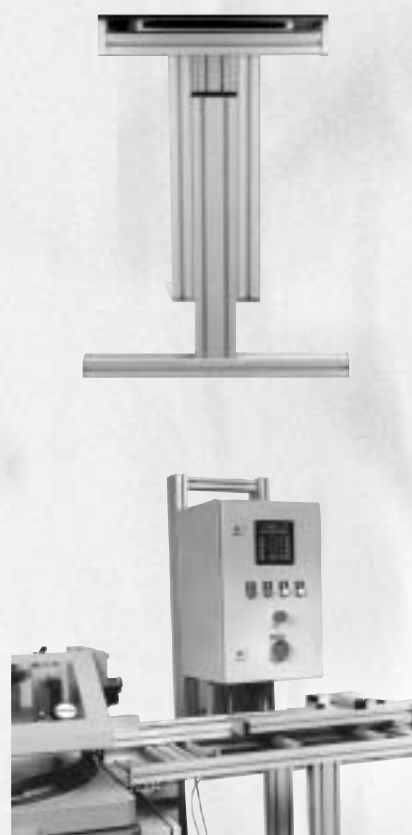
- Use bearing assembly S Part N° 21.1722/0 or bearing assembly for transport roller Part N° 21.1056/0



LONGITUDINAL STOPS



LONGITUDINAL STOPS



MiniTec longitudinal stops are proven turn-key solutions based on MiniTec standard elements of the MiniTec profile system. Its modular structure enables optimum solutions for any kind of application. All stops are equipped with a height-adjustable foot including bores for floor mounting. Connection to the machine via adaptor plate with fixing bores. Digital LCD display attached directly to the machine at operators height. Simple dimension modifications, e.g. for saw blade thickness or distance between stop and tool can be carried out via display

Standard lengths up to 6000 mm (measuring length: 5500 mm), other dimensions on request

Width carrying rollers: 200-600 mm

Distance between carrying rollers: 200 mm

Height adjustment: ± 100 mm

Standard height: 850 mm

Standard connection: right

Length measuring: magnetic tape

Measuring accuracy: ± 0.15 mm

Measuring display: LCD

Slide guide:

Linear guide LR with 4 precision bearings, clearance adjusted, shafts $\varnothing 12$ mm, hardened special steel Cf 53, Mat. no. 1.1213

Slide clamping:

Motor drive: automatically at stop position, manual drive: via switch (pneumatic) or via clamping lever.

Motor drive:

AC-motor with positioning control system, integrated in housing. Displacement speed: 0.6 m/s

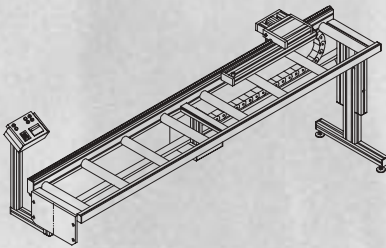
Input for motor drive:

Input terminal with foil keyboard and LCD-display, fixed in switch-box plate at operator height next to the machine.

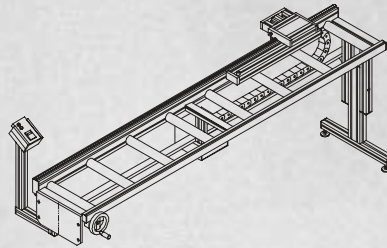
LONGITUDINAL STOPS



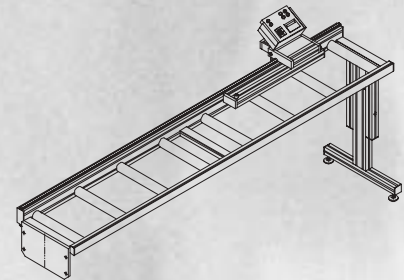
First cuts can easily be carried out: The top of the stop can be swung out of the conveyor by 180°. Adjustable measuring length compensation including scale, $L = 400$ mm, fixed onto slide.



Motorized drive with stationary display, integrated in the switch-box



Manual handwheel drive with stationary 230 V - display



Manual slide displacement with battery-driven digital display on slide

DATA REQUIRED LONGITUDINAL STOPS

Dimensions

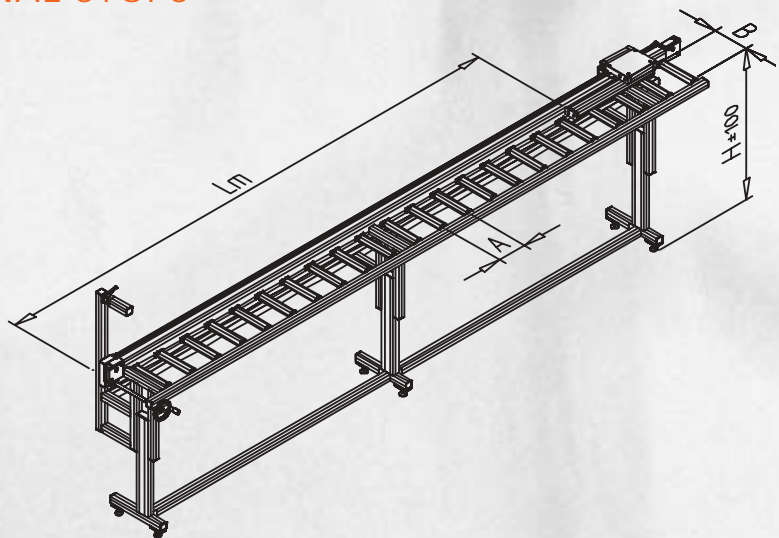
Measuring length L_m mm

Roller distance A mm

Roller width B mm

Height H mm

Load dN



Control

Drive motoric handwheel manual

Stop right left