



PREASSEMBLED ELEMENTS FOR LIFTING AND SLIDING DOORS

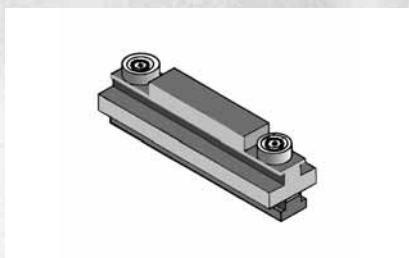
These elements are preassembled from our standard products ready for use. They are easily fixed to our profiles by using our fastening elements. For you stock of parts is not necessary and planning and assembly time can be reduced significantly.

PREASSEMBLED ELEMENTS FOR LIFTING AND SLIDING DOORS

All elements are preassembled from our standard products ready for use. They are easily fixed to our profiles by using our fastening elements. You do not need stock of parts is not necessary and planning and assembly time can be reduced significantly.

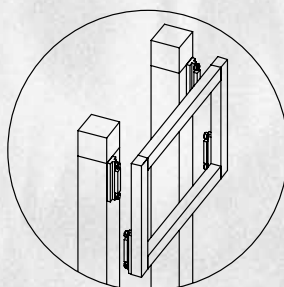


Slide-roll element

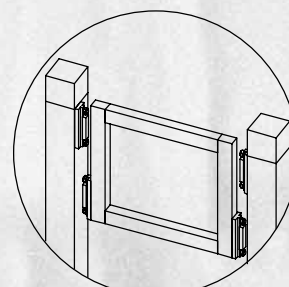


For one door four elements are necessary:
One each to be fixed at end positions of guiding profiles.
One each to be fixed at door element.
Length of sliding profile:
desired stroke + 180 mm min.

1. Disassemble the bearings from the element.
2. Insert T-slot bar into profile groove and lock at desired position.
3. Reassemble the slide and the bearings with T-slot bar.

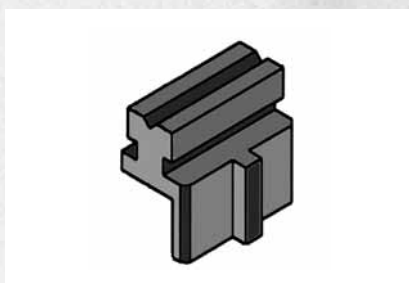


Assembly in front of stand profiles



Assembly between stand profiles

Guide for sliding-door



For a simultaneous guidance of two elements in one profile groove.
Subsequent mounting of sliding-doors into existing constructions possible.
For one door element 4 guides are necessary.

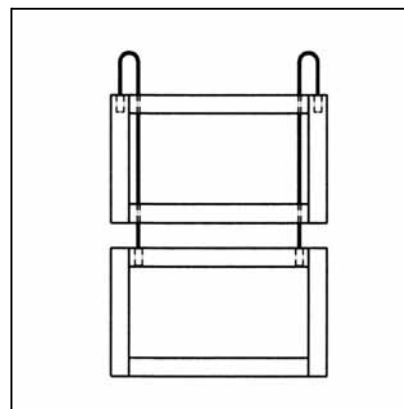
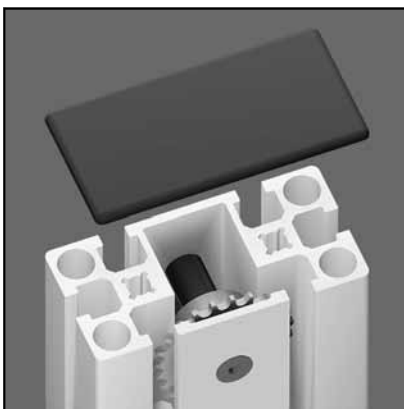
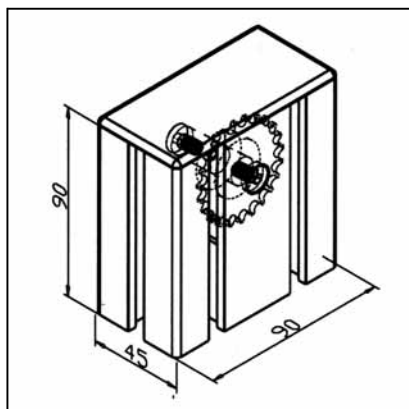
Allow for door elements:

Height: Clearance of the opening minus 11 mm
Width for 2 elements: $\frac{\text{Clear width of the opening} + 55}{2}$

2

SYNCHRONOUS PULLEY 45

Part. N° 21.1792/0



TECH. DATA / ITEMS SUPPLIED

- Housing made of profile 45 x 90
- Chain wheel, steel, preassembled for installation on broad side of the profile
- Weight 0,343 kg
- Load max. 34 kg

APPLICATIONS

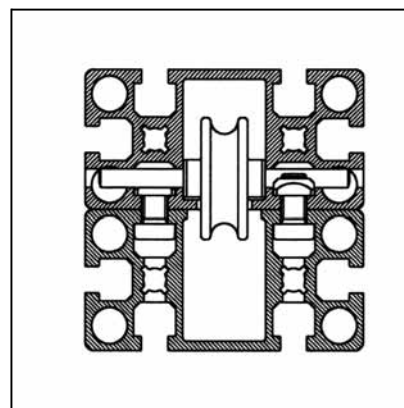
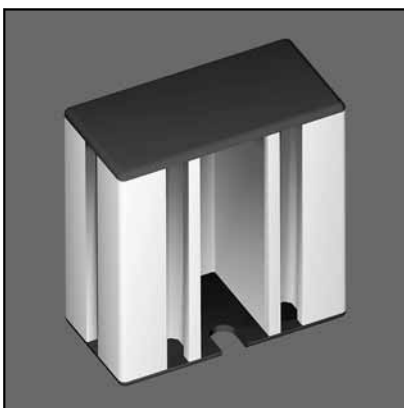
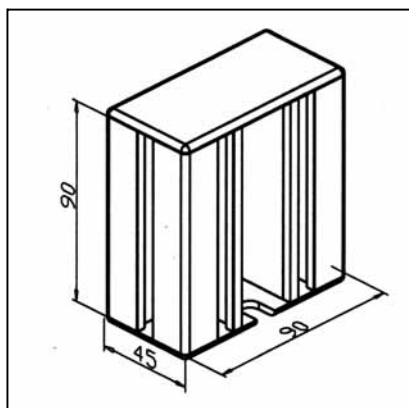
- Simultaneous opening and closing of two lifting doors running in the operate direction; doors are of similar weight
- The chain is guided in the profile groove, thus no hand-protection is required

ASSEMBLY

- Attachment on vertical profile with 2 T-slot bars 90 Part N° 21.1029/0
- Insert chain Part N° 21.1713/0 in pulley; fasten it with the door chain clamping device Part N° 21.1712/0 on both doors and insert it in the vertical profiles

END BLOCK

Part. N° 21.1780/0



TECH. DATA / ITEMS SUPPLIED

- Profile 45 x 90
- End caps 45 x 90, one of them with slot for cable passage
- Fixing kit
- Weight 0,290 kg
- Length 90 mm

APPLICATIONS

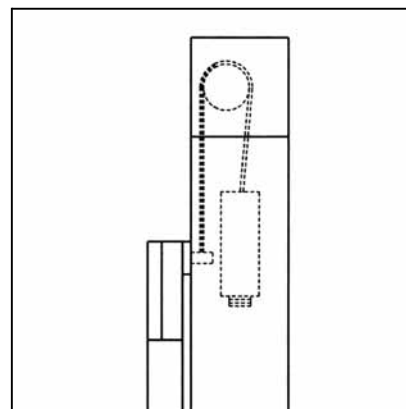
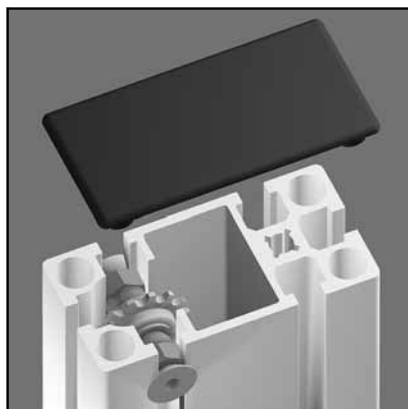
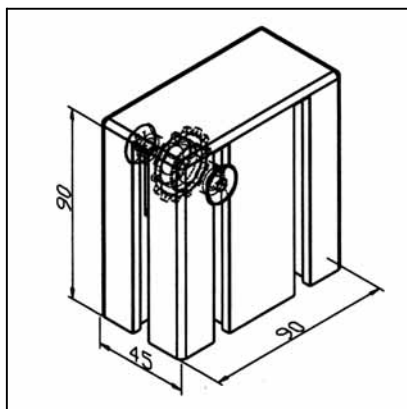
- Safety device for cable pulleys
- Chain pulley 90

ASSEMBLY

- Use fixing kit from supply schedule

CHAIN PULLEY 32

Part. N° 21.1774/0



TECH. DATA / ITEMS SUPPLIED

- Housing made of profile 45 x 90

- Chain wheel, steel, zinc-plated, preassembled, for small profile side

- End cap

- Weight 0,372 kg

- Load max. 50 kg

APPLICATIONS

- Chain reverse for counterweights in lifting doors; for inner balancing weight in profiles 45 x 90 F or 45 x 90 G

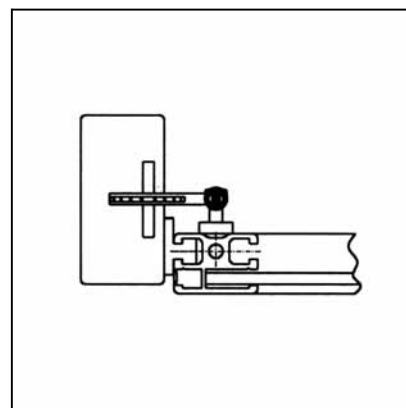
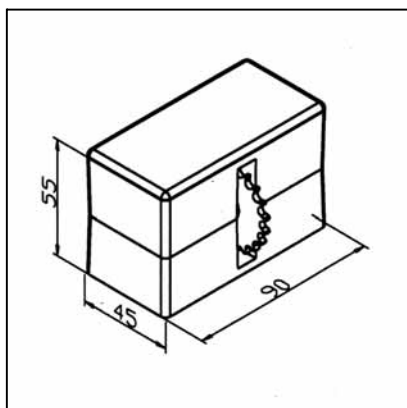
- The cable is guided in the profile groove, thus no hand-protection is required

ASSEMBLY

- Attachment on vertical profiles with 2 slot-bars 90 **Part N° 21.1029/0**- Application of chain **Part N° 21.1713/0** with door chain clamping device **Part N° 21.1712/0** and weight chain clamping device **Part N° 21.1711/0**

CHAIN PULLEY 45 A

Part. N° 21.1838/0



TECH. DATA / ITEMS SUPPLIED

- Housing aluminium GD, powder coated, grey

- Chain wheel, steel, zinc-plated, preassembled

- End cap

- Fixing kit

- Weight 0,347 kg

- Load max. 50 kg

APPLICATIONS

- Chain reverse of counterweights for lifting doors for inner counterweight in profile 45 x 90 L or 45 X 90 G

- Chain runs on the outer profile side and in the middle of the broad side; if required covered with hand-protection **Part N° 21.1780/0**

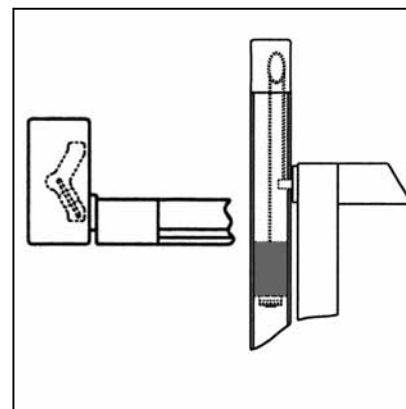
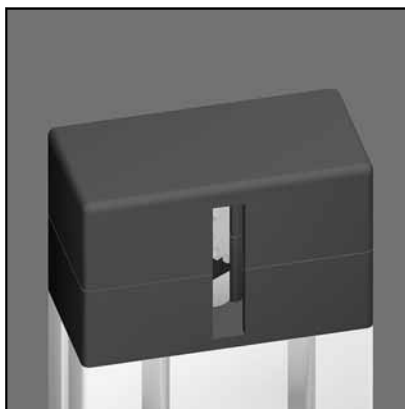
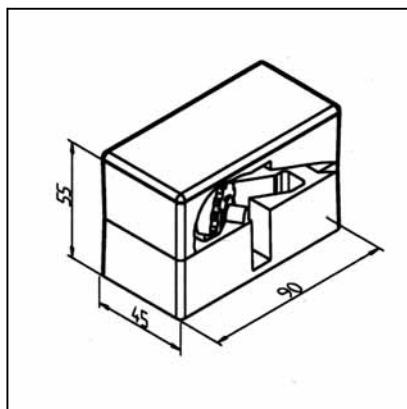
ASSEMBLY

- Attachment with fixing kit from supply schedule; thread M8 in vertical profile required

- Use of chain **Part N° 21.1713/0** with door chain clamping device **Part N° 21.1712/0** and weight chain clamping device **Part N° 21.1711/0**

CHAIN PULLEY 45 I

Part. N° 21.1840/0

**TECH. DATA / ITEMS SUPPLIED**

- Housing aluminium GD, powder coated, grey
- Chain wheel, steel, zinc plated, preassembled
- End cap
- Fixing kit
- Weight 0,347 kg
- Load max. 50 kg

APPLICATIONS

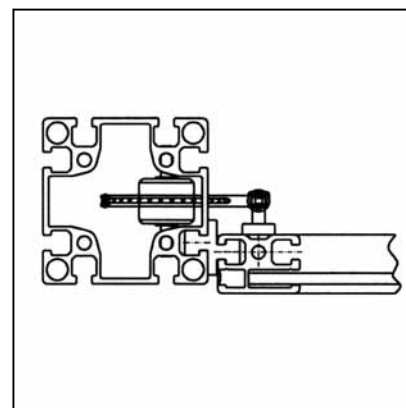
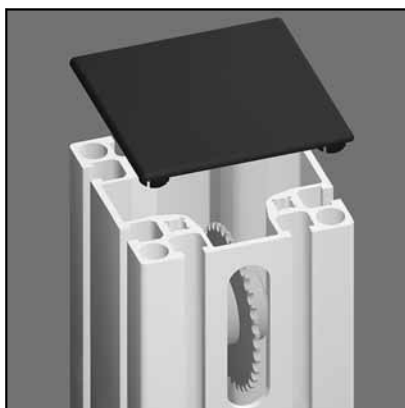
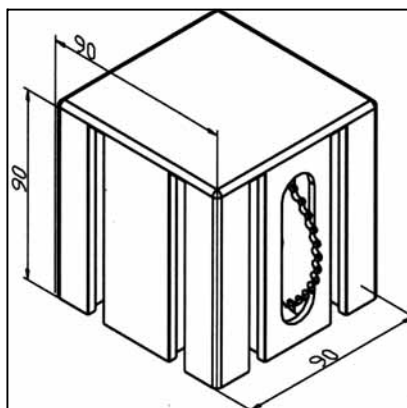
- Chain reverse of counterweights for lifting doors for inner counterweight in profile 45 x 90 L or 45 X 90 G
- Chain runs on the broad side of the profile in the right or left profile groove (adjustable chain wheel) no handprotection required

ASSEMBLY

- Attachment with fixing kit from supply schedule; thread M8 in vertical profile required
- Use of chain **Part N° 21.1713/0** with door chain clamping device **Part N° 21.1712/0** and weight chain clamping device **Part N° 21.1711/0**

CHAIN PULLEY 90

Part. N° 21.1839/0

**TECH. DATA / ITEMS SUPPLIED**

- Housing aluminium GD, powder coated, grey
- Chain wheel, steel, zinc plated, preassembled
- End cap
- Weight 0,681 kg
- Load max. 70 kg

APPLICATIONS

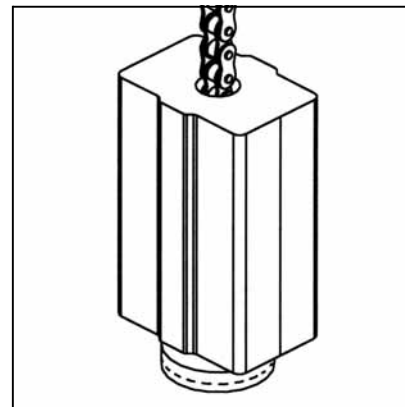
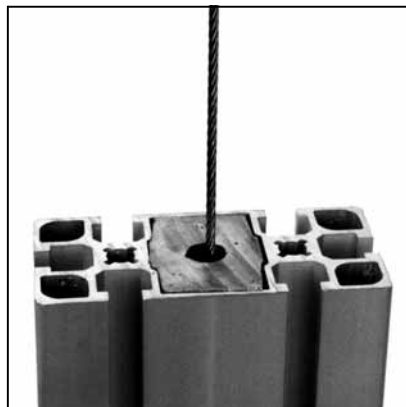
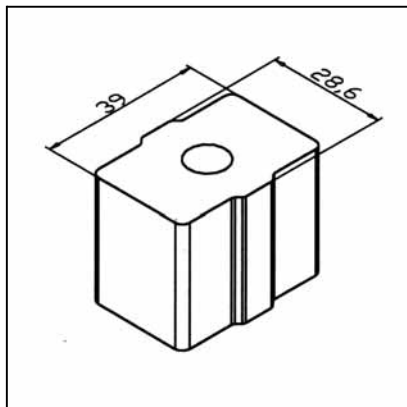
- Chain reverse for counterweights for lifting doors, for inner balancing weight in profile 90 x 90 L
- The chain is guided on the outside and in the middle of the profile surface; cover with hand-protection **Part N° 21.1780/0**

ASSEMBLY

- Attachment on vertical profiles with 4 slot-bars **Part N° 21.1029/0**
- Use of chain **Part N° 21.1713/0** with door chain clamping device **Part N° 21.1712/0** and weight chain clamping device **Part N° 21.1711/0**

COUNTERWEIGHT 45

Part. N° 21.1772/0



TECH. DATA / ITEMS SUPPLIED

- Pb cast, special hard
- For profiles 45 x 90 L or 45 x 90 G
- Weight 0,10 kg/m
- Length 33 cm
- On request also other length available Part N° 21.1772/1

APPLICATIONS

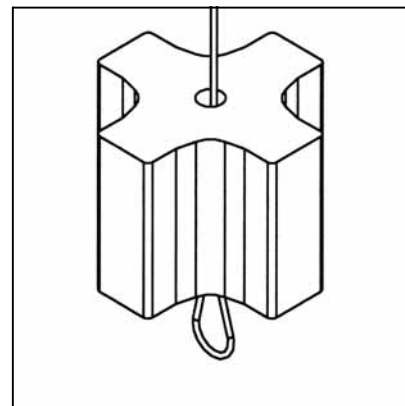
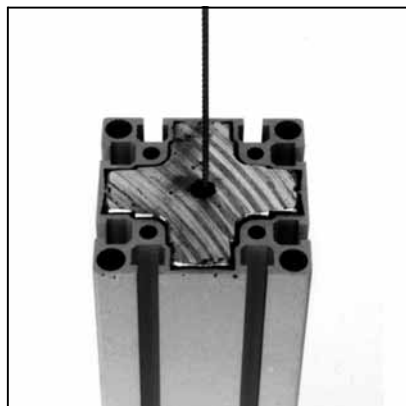
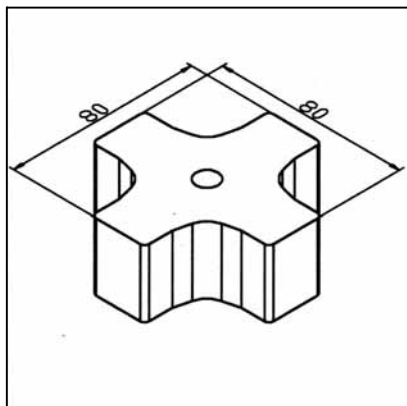
- Counterweight for large lifting doors
- For cable and chain

ASSEMBLY

- Insert the counterweight into the profile
- Fasten the steel cable Part N° 21.1777/0 with cable clamping device Part N° 21.1797/0 on the lifting door
- Fasten chain Part N° 21.1713/0 with weight chain clamping device Part N° 21.1711/0 and with door chain clamping device Part N° 21.1712/0 on the door

COUNTERWEIGHT 90

Part. N° 21.1778/0



TECH. DATA / ITEMS SUPPLIED

- Pb cast, special hard
- For profiles 90 x 90 L or 90 x 90 G
- Weight 0,385 kg/m
- Length 26 cm
- On request also other length available Part N° 21.1778/1

APPLICATIONS

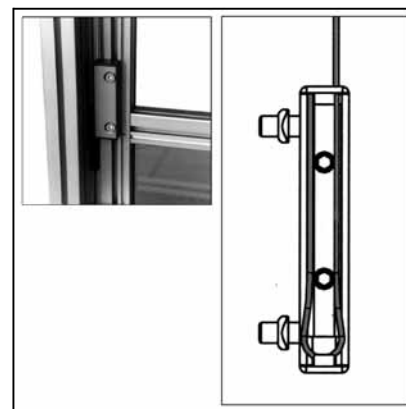
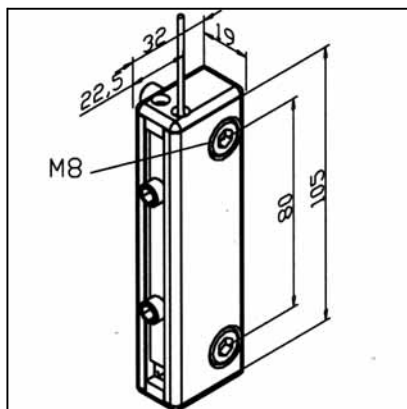
- Counterweight for large lifting doors

ASSEMBLY

- Insert the counterweight into the profile
- Fasten the steel cable Part N° 21.1777/0 with cable clamping device Part N° 21.1797/0 on the lifting door
- Fasten chain Part N° 21.1713/0 with weight chain clamping device Part N° 21.1711/0 and with door chain clamping device Part N° 21.1712/0 on the door

ROPE CLAMP

Part. N° 21.1797/0



TECH. DATA / ITEMS SUPPLIED

- Profile 19 x 32
- 1 Clamping plate
- 2 hex socket cap screws M8 x 25 with square nuts M8
- 2 End caps, one with throughbore
- Weight 0,149 kg

APPLICATIONS

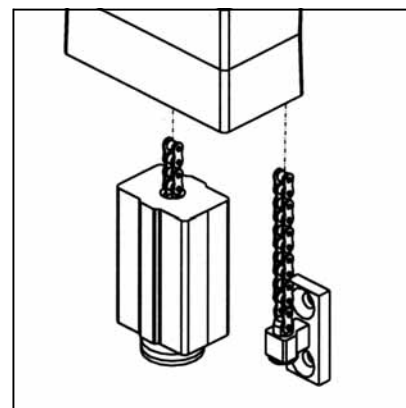
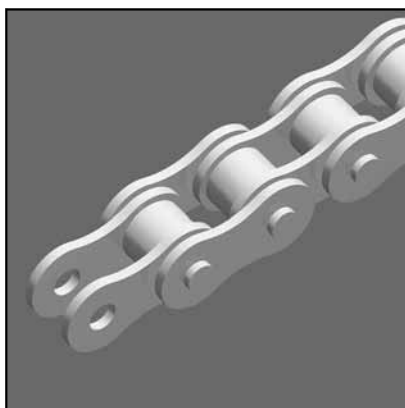
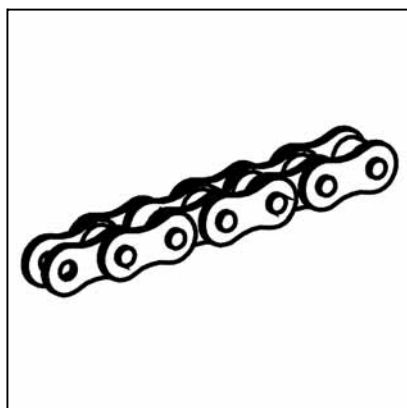
- Connection of counterweight and door element in lifting doors

ASSEMBLY

- Remove lower end cap and unscrew set-screw
- Attach rope clamp with fastening set at the top of the door element
- Pull the rope through the bore of the upper end cap
- Put the counterweight in desired position (test in upper and lower end position of the door element)
- Lay rope end in loop around clamping plate, slide into the slot and fix the two set screws
- If necessary cut cable end
- Fix lower end cap

CHAIN

Part. N° 21.1713/0



TECH. DATA / ITEMS SUPPLIED

- Roller chain, steel
- Size 4
- Weight 0,120 kg/m
- Breacking load min. 3000 N
- Please indicate desired length

APPLICATIONS

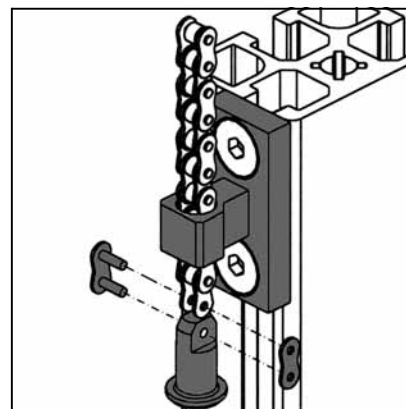
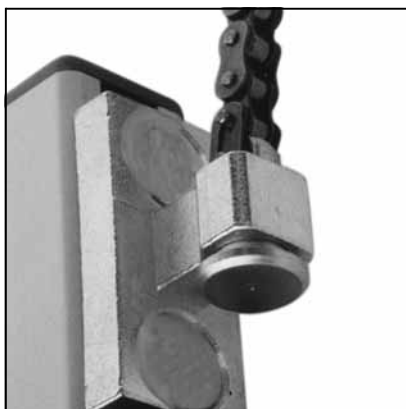
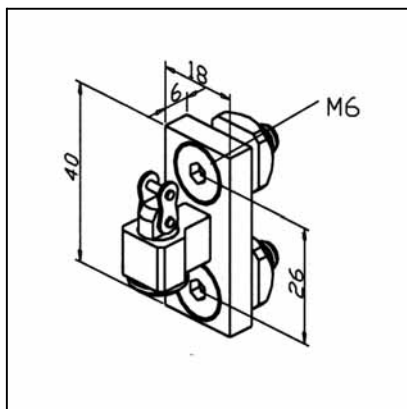
- Use in connection with counterweight 45 or 90 and chain pulleys
- Door chain clamping device **Part N° 21.1712/0** for fastening the chain on the door
- Weight chain clamping device **Part N° 21.1711/0** for fastening the chain on the side of the counterweight

ASSEMBLY

- Lead the chain through the counterweight and through the fixing kit for chain (counterweight side) **Part N° 21.1711/0** mount link for chain
- For mounting on door lead chain through fixing kit for chain (door side) **Part N° 21.1712/0**

DOOR CHAIN CLAMPING DEVICE

Part. N° 21.1712/0



TECH. DATA / ITEM SUPPLIED

- Steel zinc plated	
- Fixing kit	
- Weight	0,060 kg

APPLICATIONS

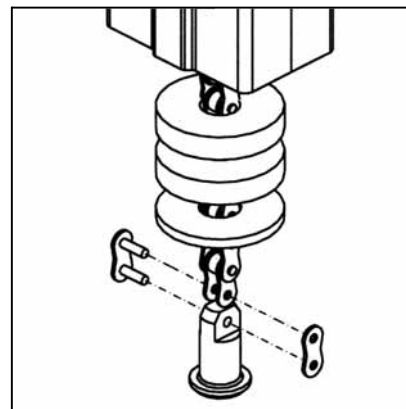
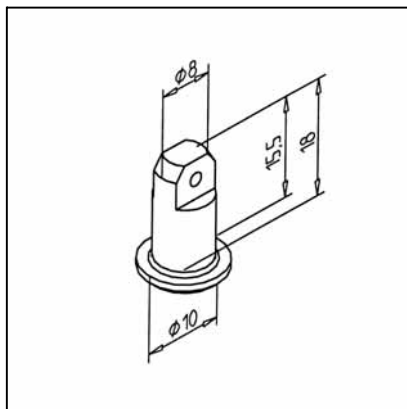
- Use in connection with counterweight 45 or 90 and pulleys
- Use in connection with chain **Part N° 21.1713/0** for fastening on door side

ASSEMBLY

- Lead the chain through the counterweight and through the fixing kit for chain (counterweight side) **Part N° 21.1711/0** mount link for chain
- For mounting on door lead chain through fixing kit for chain (door side) **Part N° 21.1712/0** and mount bolt with link for chain

FIXING KIT FOR CHAIN (COUNTERWEIGHT SIDE)

Part. N° 21.1711/0



TECH. DATA / ITEMS SUPPLIED

- Steel, zinc plated	
- Rubber-ring	
- Link for chain	
- Weight	0,015 kg

APPLICATIONS

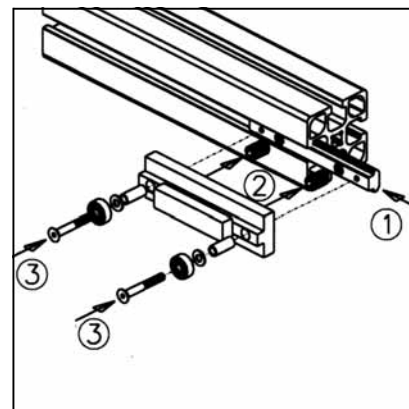
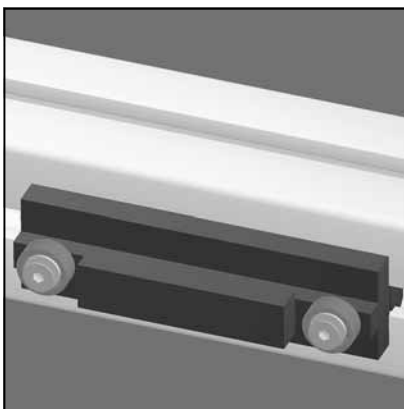
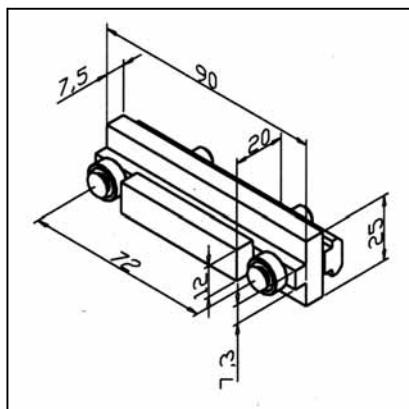
- Use in connection with counterweight 45 or 90 and pulleys
- Use in connection with chain **Part N° 21.1713/0**

ASSEMBLY

- Lead the chain through the counterweight and through the fixing kit for chain (counterweight side) **Part N° 21.1711/0** mount link for chain
- For mounting on door lead chain through fixing kit for chain (door side) **Part N° 21.1712/0**

SLIDE-ROLL ELEMENT

Part. N° 21.1796/0



TECH. DATA / ITEMS SUPPLIED

- Hard plastic black, Extremely wear resistant
- 1 T-slot bar, steel, zinc plated
- 2 ball-bearings, premounted
- Weight 0,093 kg
- Load max. 200 N

APPLICATIONS

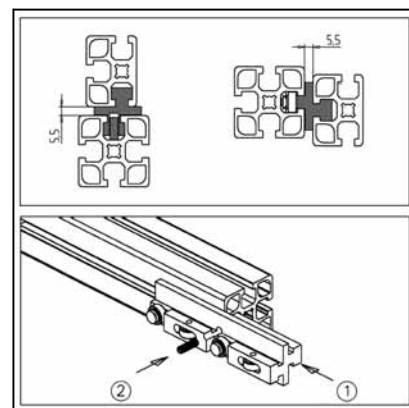
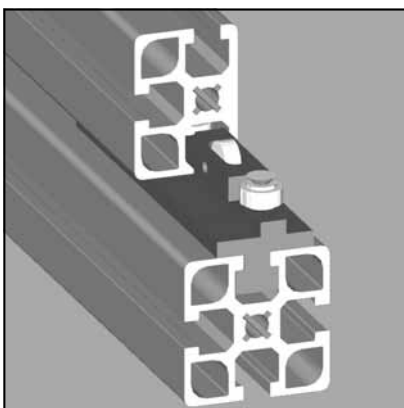
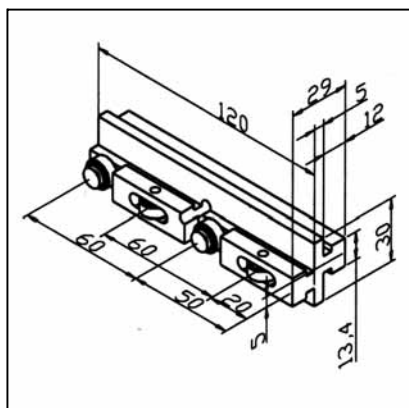
- Guide for lifting doors in the groove of the vertical profile
- Light linear slides
- Workpiece-slides, drawers

ASSEMBLY

- 1: Disassemble the bearings from the element
- 2: Insert t-slot bar into profile groove and lock at desired position
- 3: Reassemble the slide and the bearings with t-slot bar, secure with suitable glue

GLIDE-ROLL ELEMENT

Part. N° 21.1799/0



TECH. DATA / ITEMS SUPPLIED

- Hard plastic black, extremely wear resistant
- 1 clamping screw, steel, zinc plated
- 4 built-in ball-bearings
- Weight 0,060 kg
- F max 300 N

APPLICATIONS

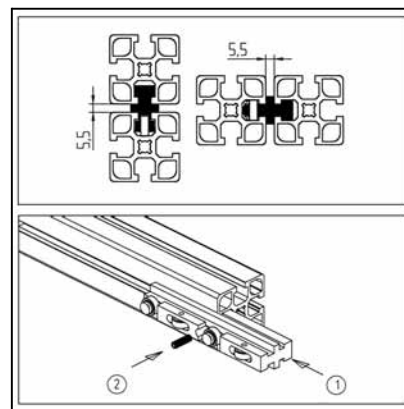
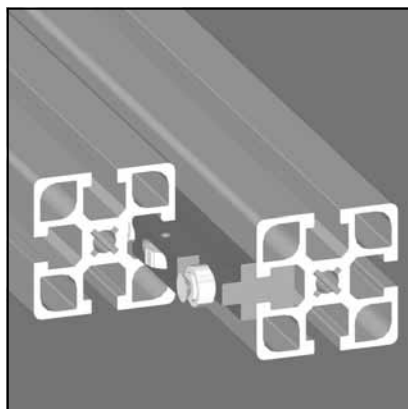
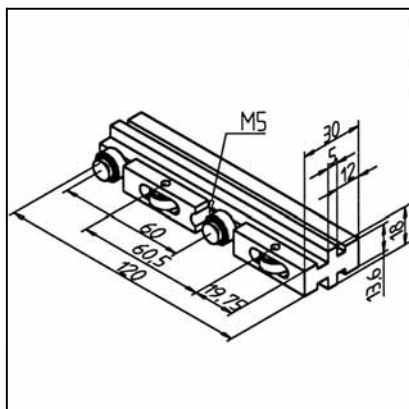
- Guide for sliding-doors, lifting-doors, workpiece-slides, light linear guides
- The element provides 5 mm eccentricity for the construction of sliding-doors with 2 casements or guides with 5 mm ground clearance

ASSEMBLY

- 1: Insert the element with screw side into profile groove of moveable construction part
- 2: Tighten the screw
- Slide the completely mounted moveable part into the grooves of the guiding profiles

GLIDE-ROLL ELEMENT PARALLEL

Part. N° 21.1714/0



TECH. DATA / ITEM SUPPLIED

- Hard plastic black, extremely wear resistant

- 1 clamping screw, steel, zinc plated

- 4 built-in ball-bearings

- Weight 0,060 kg

- F max 300 N

APPLICATIONS

- Guide for sliding-doors, lifting-doors, workpiece-slides, light linear guides

- Both slots are parallel to each other for construction of flushing sliding-doors

ASSEMBLY

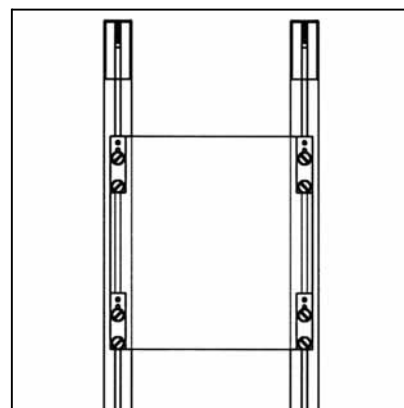
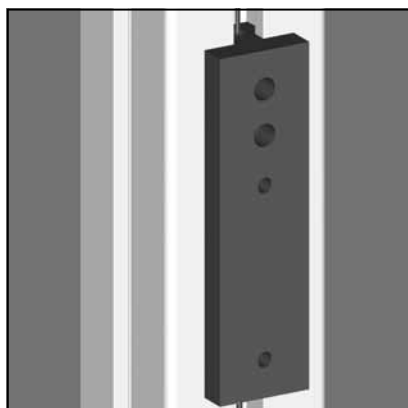
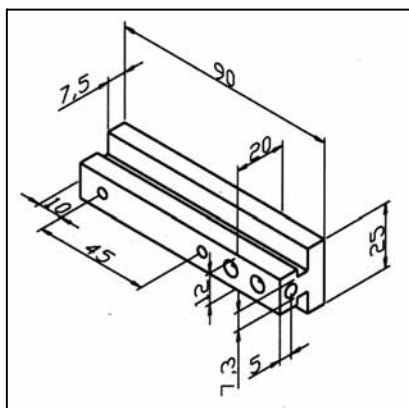
- 1: Insert the element with screw side into profile groove of moveable construction part

- 2: Tighten the screw

- 3: Slide the completely mounted moveable part into the grooves of the guiding profiles. Secure the moveable part against falling out with screws at both ends

SLIDE ELEMENT

Part. N° 21.1795/0



TECH. DATA / ITEMS SUPPLIED

- Hard plastic black, Extremely wear resistant

- Ready for use with rope-bore and clamp

- Weight 0,029 kg

APPLICATIONS

- Guide for light lifting doors and in same function connection of door element and counterweight

- Especially suitable for direct attachment on panel elements without frame

ASSEMBLY

- Connect the cable of the counterweight with slide element

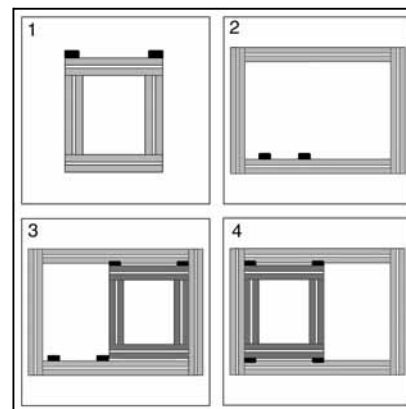
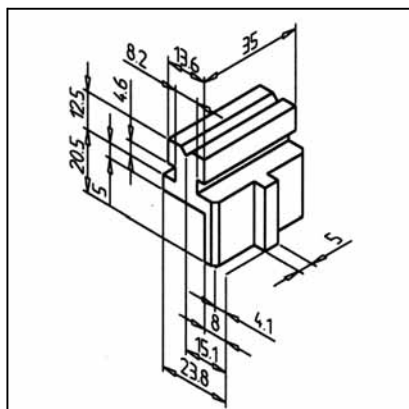
- Secure cable end with clamp

- Screw into the groove of the vertical profile

- Screw panel element

GUIDE FOR SLIDING DOOR

Part. N° 22.1079/0



TECH. DATA / ITEMS SUPPLIED

- Plastic PA 6.6, black
- 1 screw
- For 1 door element 4 guides are necessary
- Weight 0,029 kg

APPLICATIONS

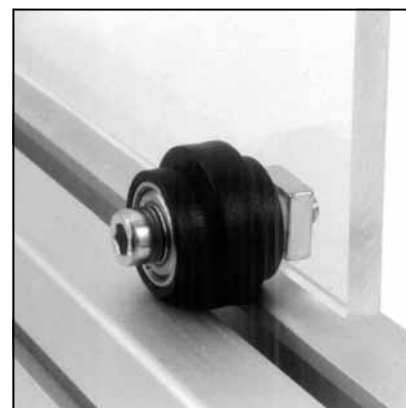
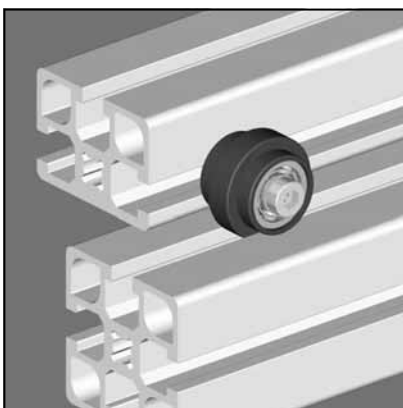
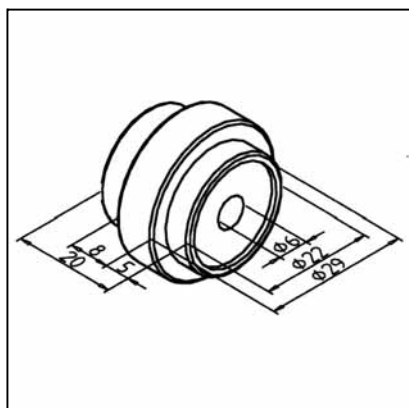
- Sliding doors
- Sliding elements
- Workpiece-slides, drawers
- For a simultaneous guidance of 2 elements in 1 profile groove
- Subsequent mounting of sliding-doors into existing constructions possible

ASSEMBLY

- 1: Fix the upper guide at the frame of the door element
- 2: Insert the lower guide into the frame construction
- 3: Insert the door element
- 4: Slide it into the lower guide and secure at desired position
- Mount second door element
- Allowance: see page 186

ROLLER ELEMENT

Part. N° 21.1782/0



TECH. DATA / ITEMS SUPPLIED

- ABS, grey
- With 2 ball-bearings 626 ZZ
- Weight 0,033 kg
- Load max. 20 kg

APPLICATIONS

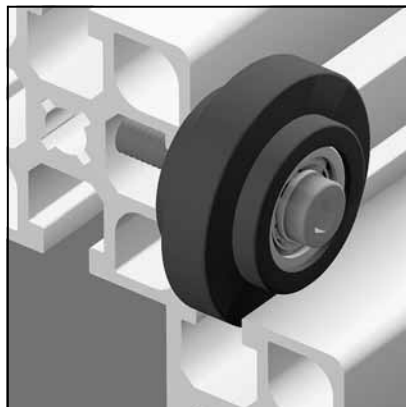
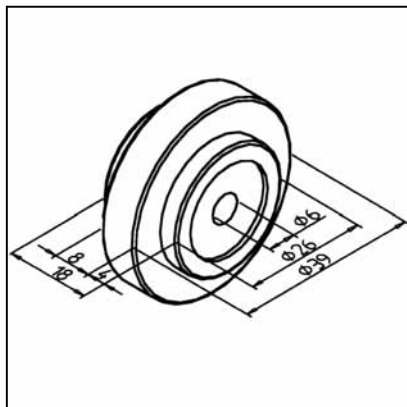
- Guide for sliding doors, lifting doors and drawers

ASSEMBLY

- Attachment with hex socket cap screws M6 x 35 and square nut M6 on profile grooves or directly on the panel element

ROLLER ELEMENT S

Part. N° 21.1781/0



TECH. DATA / ITEMS SUPPLIED

- ABS, grey	
- With 2 ball-bearings 626 ZZ	
- Weight	0,044 kg
- Load max. (roller)	20 kg

APPLICATIONS

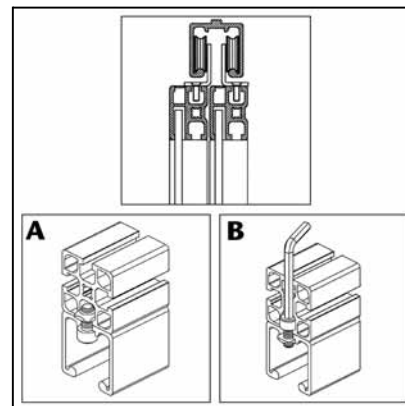
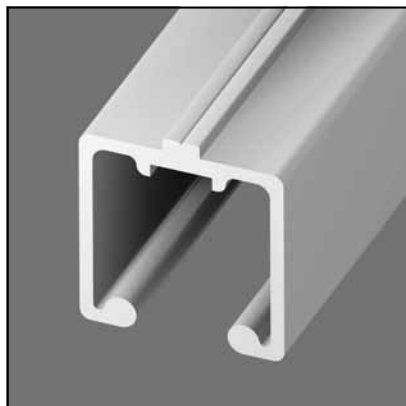
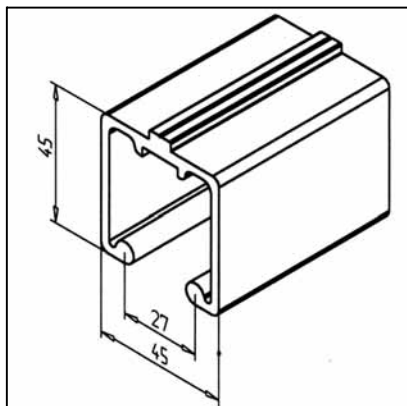
- Guide for sliding doors, lifting doors and drawers

ASSEMBLY

- Attachment with hex socket cap screws M6 x 35 and square nut M6 on profile grooves or directly on the panel element

SLIDING DOOR PROFILE

Part. N° 20.1038/0



TECHN. DATA / ITEMS SUPPLIED

- Ix =	15,347 cm ⁴
- Iy =	15,597 cm ⁴
- wx =	5,912 cm ³
- wy =	6,932 cm ³
- Weight	1,474 kg/m
- Length	5 m
- Packing unit	40 m

APPLICATIONS

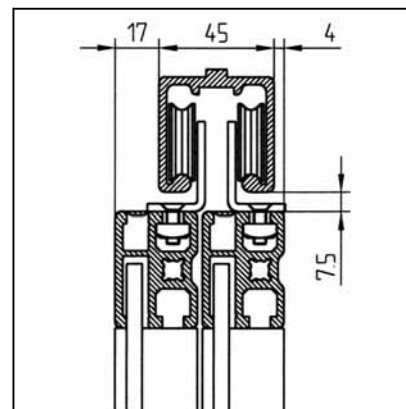
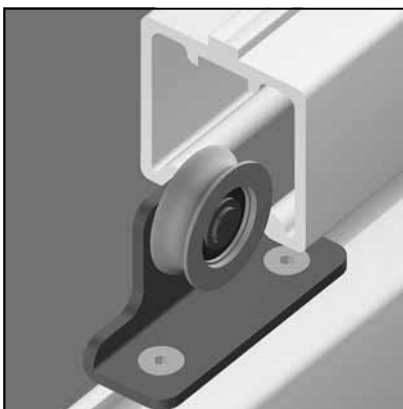
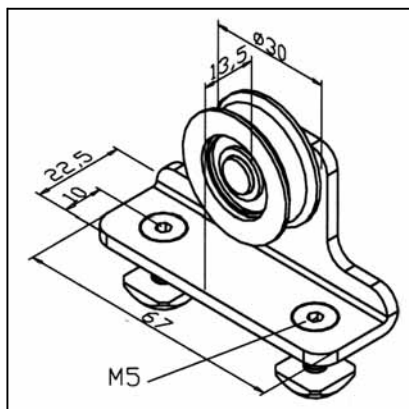
- Two wing sliding doors
- One wing sliding doors

ASSEMBLY

- Drill Ø 5 mm holes in centering groove; bore pitch: 250 - 400 mm depending on the load
- A) Position M8 F square nuts in the supporting profile and fasten the sliding rail profile with M8 x 25 cap screw
- B) Drill holes or step holes in the supporting profile and insert the square nuts in the sliding profile; the nuts are secured against torsion

ROLLER ELEMENT FOR SLIDING DOOR

Part. N° 21.2000/0



TECH. DATA / ITEMS SUPPLIED

- Plastic roller with ball-bearing
- Zinc plated steel support
- Fixing kit
- Weight 0,080 kg
- Load max. (roller) 60 kg

APPLICATIONS

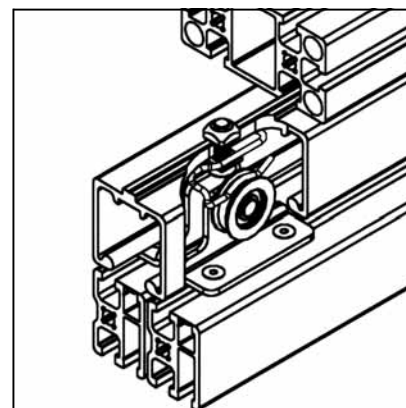
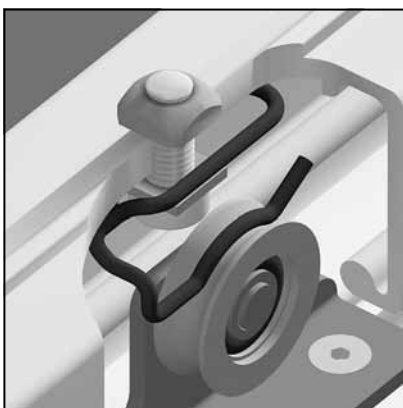
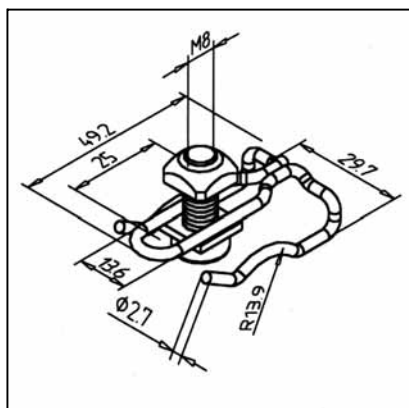
- Easy-running, multi-wing sliding doors in guard units, exhibition stands, testing units, etc.

ASSEMBLY

- Fasten the roller elements on profile groove; use fixing kit from supply schedule
- Insert the doors in the sliding rail profile and gently swing out the doors at their bottom end
- Secure the sliding door at the bottom with locking pins, sliding rails 8N Part N° 22.1085/0 or U-Profile Part N° 21.2002/0 against swinging

STOP FOR SLIDING DOOR

Part. N° 21.2001/0



TECH. DATA / ITEMS SUPPLIED

- Spring steel wire
- Fixing kit
- Weight 0,010 kg

APPLICATIONS

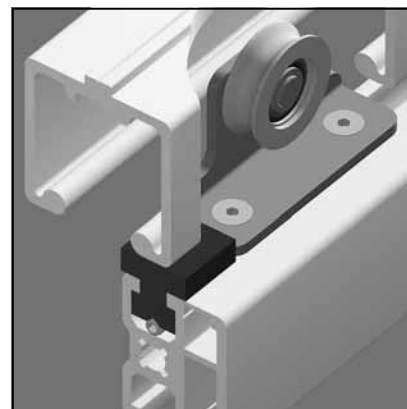
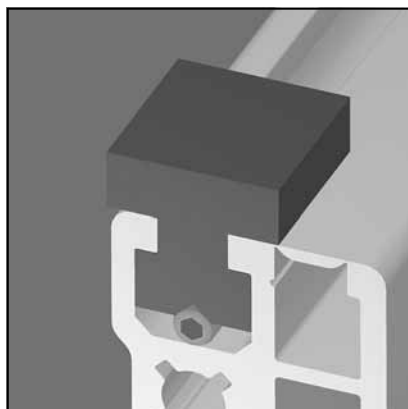
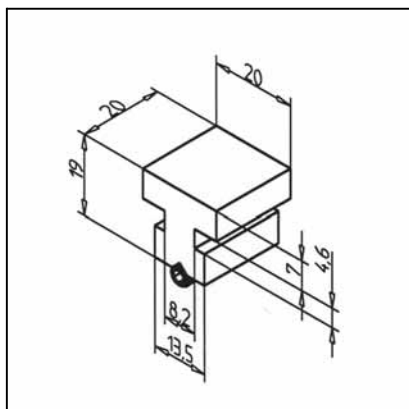
- Stop for sliding doors in their end positions (open / closed)

ASSEMBLY

- Mark end position of the wheel
- Bore drill Ø 8,5 m in sliding door profile
- Use fixing kit from supply schedule

ANTI LIFT FOR SLIDING DOOR

Part. N° 21.2003/0



TECH. DATA / ITEMS SUPPLIED

- Hard plastic, black
- Fixing kit
- Weight 0,009 kg

APPLICATIONS

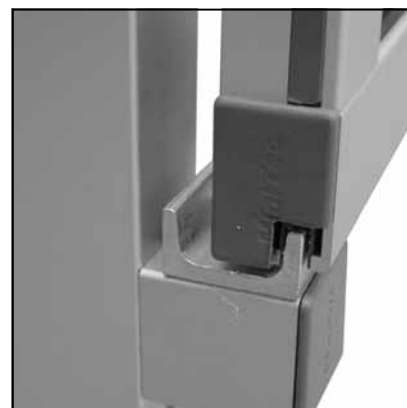
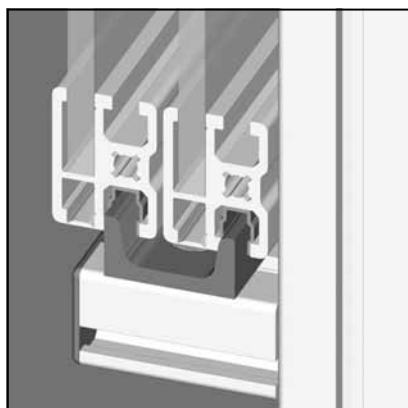
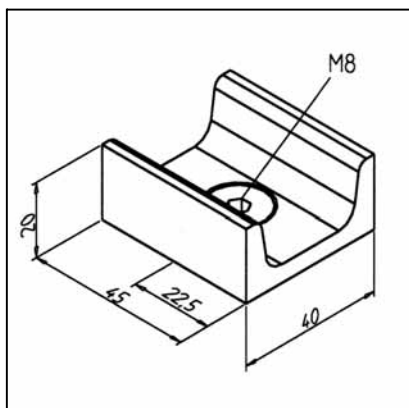
- Securing of sliding doors against lift off
- Reduction of pendulum motion

ASSEMBLY

- Slip lift for sliding door in upper profile-groove of the door-element
- Secure the position by screwing the included set-screw horizontally in profile groove underneath antilift
- Fix end cap

U-BAR FOR SLIDING DOOR

Part. N° 21.2002/0



TECH. DATA / ITEMS SUPPLIED

- Steel, zinc plated
- Fixing kit
- Weight 0,012 kg

APPLICATIONS

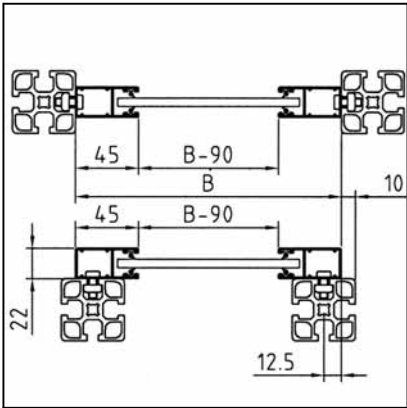
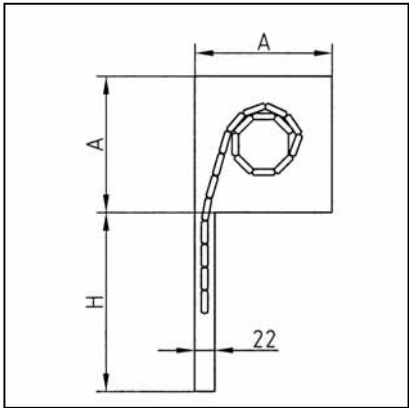
- Securing of sliding doors against lateral swinging

ASSEMBLY

- Hang up the doors
- Mount U-Bar on profile (-60 mm), slide in position and fix
- For smooth movement provide profile grooves with cover profile

ROLLING DOOR WITH DRIVE

Part. N° 29.0402/0



TECH. DATA / ITEMS SUPPLIED	
- Aluminium, powder coated silver	
- 2 lateral guide rails, housing	
- Electrical drive 230 V	
- Without switch	
- Max. width	2,70 m
- Cable length	2 m
- Please indicate width B and stroke H	

APPLICATIONS	
- Cupboard for instruments	
- Tools boxes	
- Computer racks	
- Counters	
- Machine guards	

ASSEMBLY	
- Assemble lateral guides with housing	
- Fix guides and housing in frame	
- Housing A = 152, stroke H up to 1,60 m, Part N° 29.0402/0	
- Housing A = 167,5, stroke H up to 2,35 m, Part N° 29.0403/0	
- Housing A = 181, stroke H up to 2,70 m, Part N° 29.0404/0	