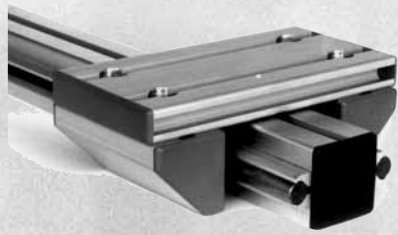
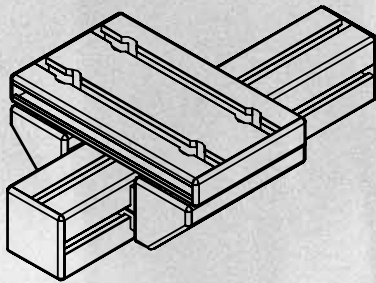


LINEAR SYSTEM LN/LG

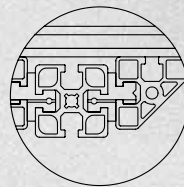
SLIDEWAYS



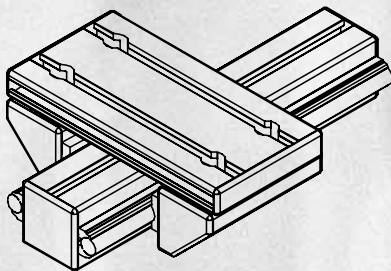
The LN/LG slide guides were built for applications where demands for guidance accuracy are not high but where extreme usage conditions are present. These guides are especially suitable for wet operation, high dust concentrations, and insufficient lubrication. The slides series LN/LG are constructed according to the same modular principle as series LR.



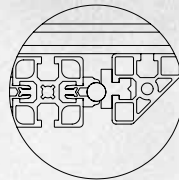
Series LN:



Slide guidance in profile groove and on profile surface. This series requires little space.



Series LG:



Slide guidance on ground and hardened shafts h6 made from material Cf53. For operation in humid environment we recommend the use of our stainless shafts.

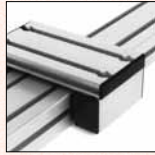
Accuracy: Series LG: ± 0.15 mm Series LN: ± 0.20 mm.
The lateral guide rails can be used to adjust clearance.

Max. load: 50 N/cm supporting slide rail (= slide length)
Slide friction coefficient: 0.05 on steel shaft (Series LG), 0.1 on anodized profile surface (Series LN)

This bearing requires no lubrication. Please consider higher slip-stick effect.

Travel: 1 m/sec (max.)
Average temperature: 50°C (max.)
Peak load: 70°C (max.)

The slide rail is resistant to organic acids, alkalis, hydrous solutions, inorganic salt, organic acids and alcohol. They are not fully resistant to hydrocarbon and halogenated hydrocarbons.

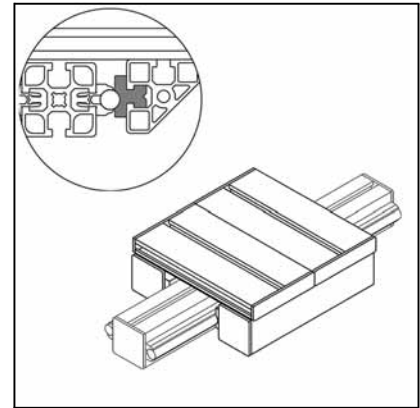
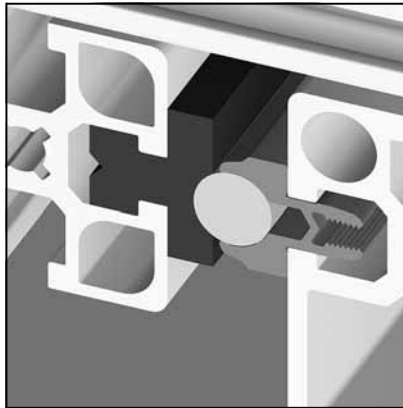
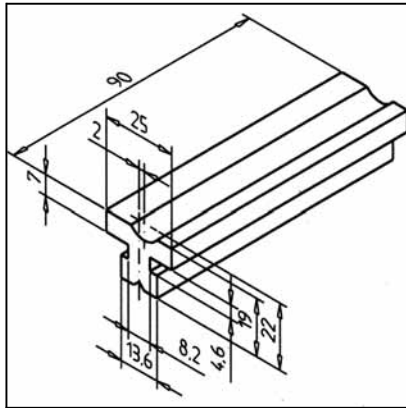


COMPONENTS
LG



SLIDE RAIL LG

Part. N° 22.1094/0



TECHN. DATA / ITEMS SUPPLIED

- Hard plastic PE-UHMW, black

- 2 set screws

- Max. surface pressure: 10 N/mm²

- Weight 0,032 kg

APPLICATIONS

- Slide guides LG

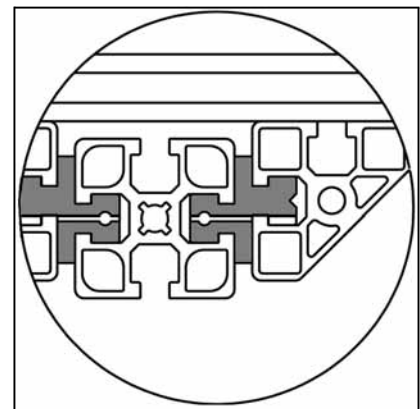
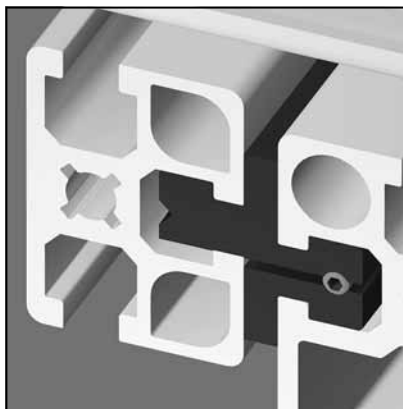
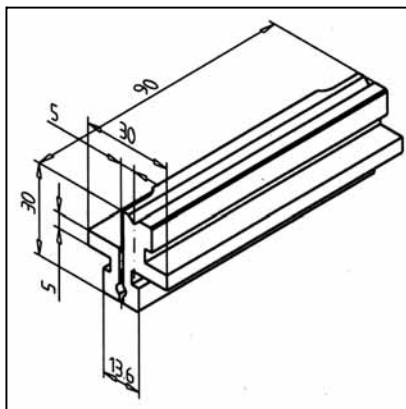
ASSEMBLY

- Insert into groove of lateral guide profile

- Secure with set screw

SLIDE RAIL LN

Part. N° 22.1095/0



TECHN. DATA / ITEMS SUPPLIED

- Hard plastic PE-UHMW, black

- Fixing kit

- Max. surface pressure: 10 N/mm²

- Weight 0,030 kg

APPLICATIONS

- Slide guides LN

- Adjusting units

- Heavy sliding doors

- Drawers

ASSEMBLY

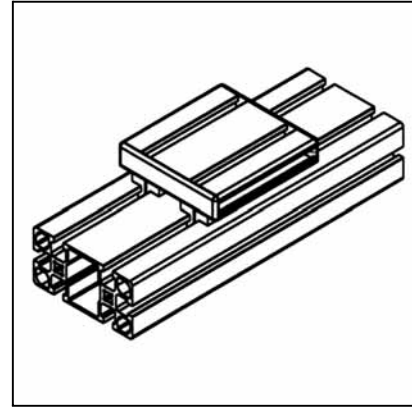
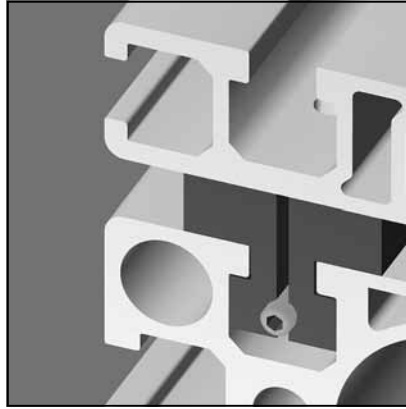
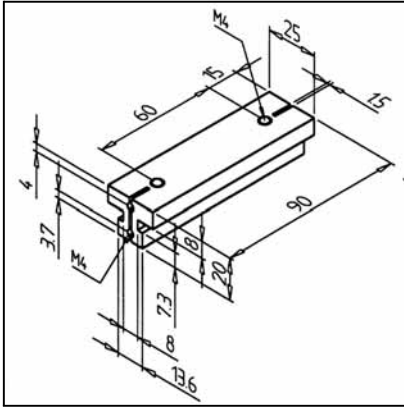
- Connect with slide plate

- Insert into grooves of the guide profile

- Adjust with clearance, use fixing kit

SLIDE RAIL LN-S

Part. N° 22.1096/0



TECHN. DATA / ITEMS SUPPLIED

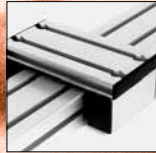
- Hard plastic PE-UHMW, black
- 2 set screws M5 x 10
- Max. surface pressure: 10 N/mm²
- Weight 0,030 kg

APPLICATIONS

- Slide guides LN-S
- Adjusting units
- Automatic advance units
- Workpiece support

ASSEMBLY

- Insert into profile groove
- Adjust with clearance
- Connect with slide plate

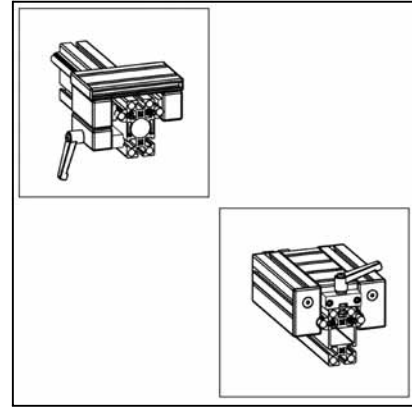
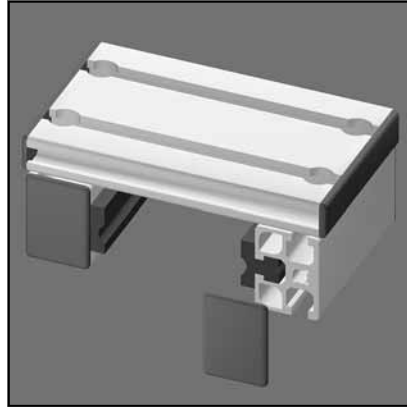
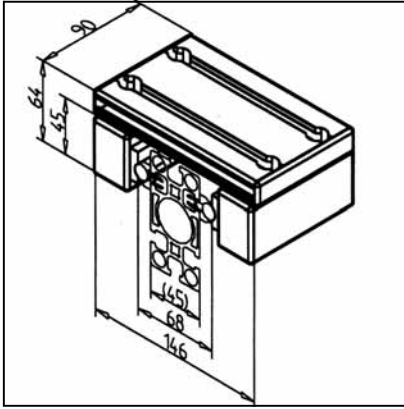


SYSTEM LN/LG -
READY FOR USE
MODULES LN/LG



SLIDE LWG 32 X 45 - 45

Part. N° 28.0132/0



TECHN. DATA / ITEMS SUPPLIED

- Slide completely assembled
- 2 slide rails LG
- End caps
- Clearance adjusted
- Load max. 450 N
- Weight 0,726 kg

APPLICATIONS

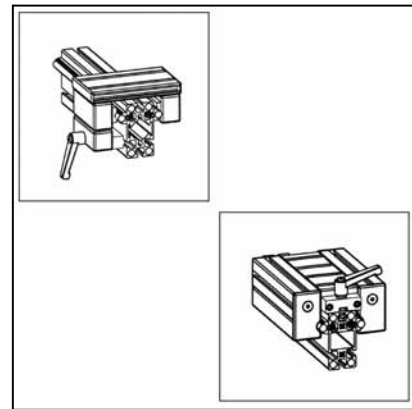
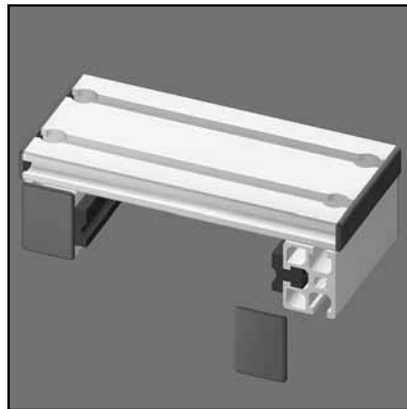
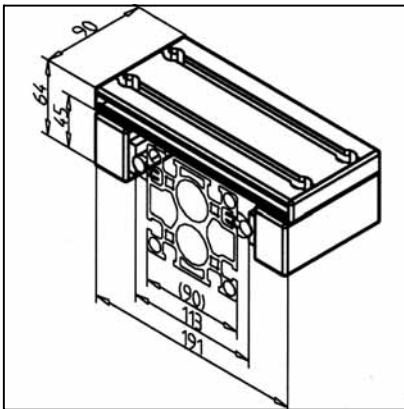
- Simple linear guides
- Automatic advance units
- Adjusting units

SPECIAL DESIGNS

- With slide clamping unit (Top)
Part N° 28.0132/1
- With slide clamping unit (Lateral)
Part N° 28.0132/2
- Slide plate made of aluminium profile 32 x 180
- Different slide lengths

SLIDE LWG 32 X 45 - 90

Part. N° 28.0133/0



TECHN. DATA / ITEMS SUPPLIED

- Slide completely assembled
- 2 slide rails LG
- End caps
- Clearance adjusted
- Load max. 450 N
- Weight 0,810 kg

APPLICATIONS

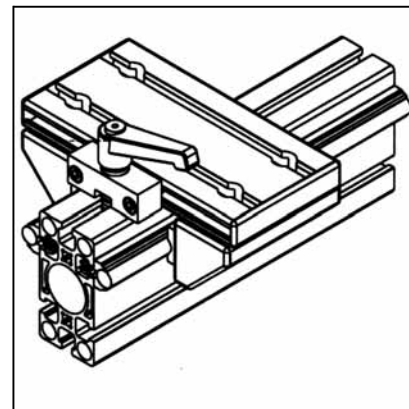
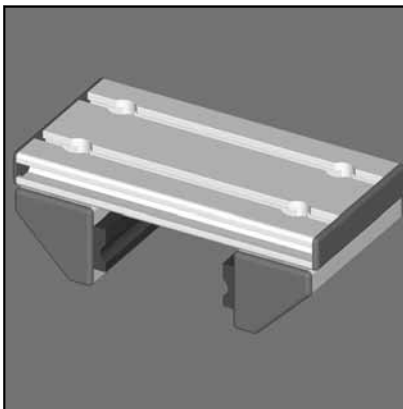
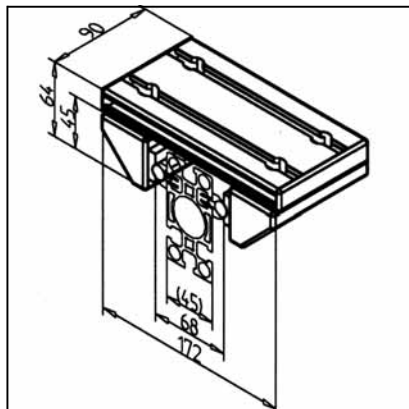
- Simple linear guides
- Automatic advance units
- Adjusting units

SPECIAL DESIGNS

- With slide clamping unit (Top)
Part N° 28.0133/1
- With slide clamping unit (Lateral)
Part N° 28.0133/2
- Slide plate made of aluminium profile 32 x 180
- Different slide lengths

SLIDE LWG 45/45° - 45

Part. N° 28.0136/0



TECHN. DATA / ITEMS SUPPLIED

- Slide completely assembled
- 2 slide rails LG
- End caps
- Clearance adjusted
- Load max. 450 N
- Weight 0,759 kg

APPLICATIONS

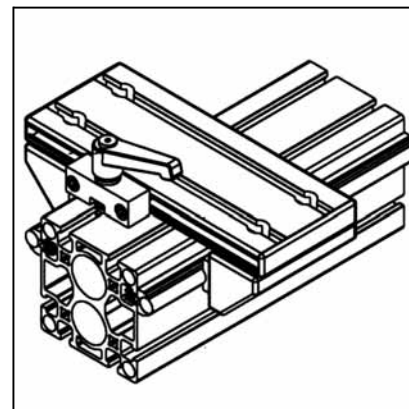
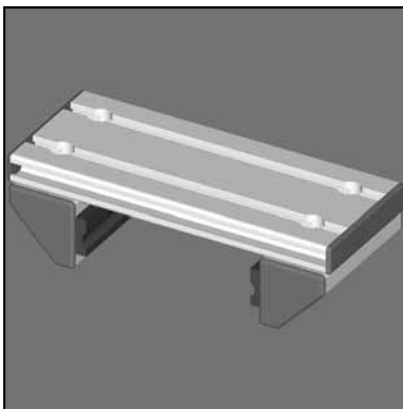
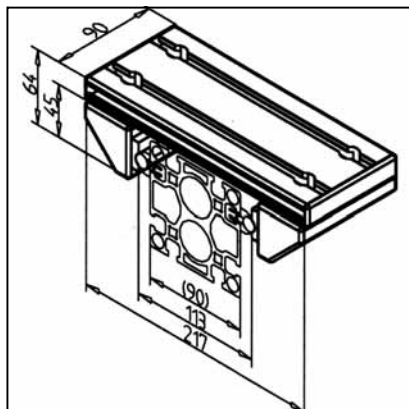
- Simple linear guides
- Automatic advance units

SPECIAL DESIGNS

- With slide clamping unit (Top)
Part N° 28.0136/1
- Slide plate made of aluminium profile 32 x 180
- Different slide lengths

SLIDE LWG 45/45° - 90

Part. N° 28.0137/0



TECHN. DATA / ITEMS SUPPLIED

- Slide completely assembled
- 2 slide rails LG
- End caps
- Clearance adjusted
- Load max. 450 N
- Weight 0,849 kg

APPLICATIONS

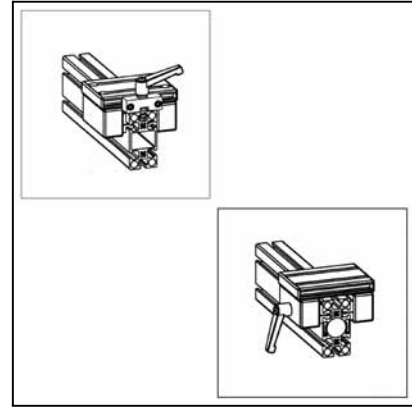
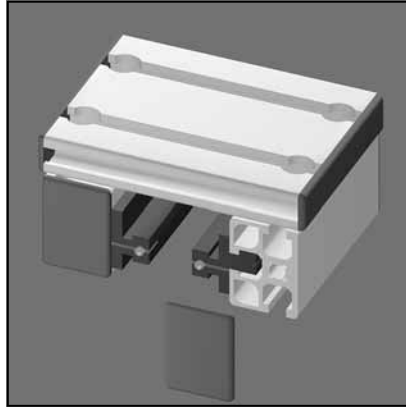
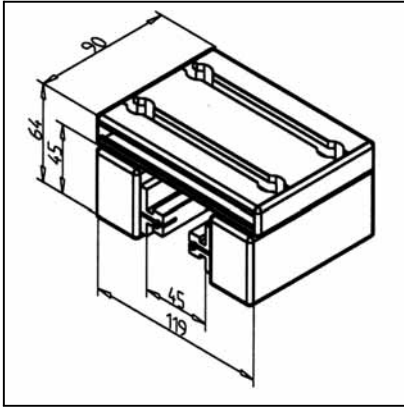
- Simple linear guides
- Automatic advance units

SPECIAL DESIGNS

- With slide clamping unit (Top)
Part N° 28.0137/1
- Slide plate made of aluminium profile 32 x 180
- Different slide lengths

SLIDE LWN 32 X 45 - 45

Part. N° 28.0192/0



TECHN. DATA / ITEMS SUPPLIED

- Slide completely assembled
- 2 slide rails LN
- End caps
- Clearance adjusted
- Load max. 450 N
- Weight 0,678 kg

APPLICATIONS

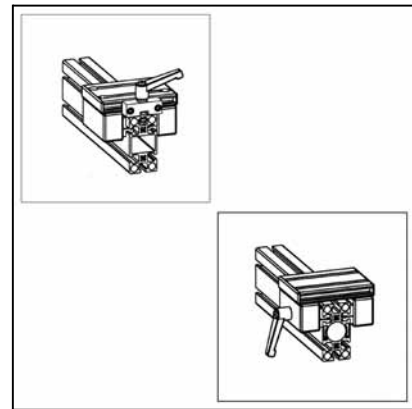
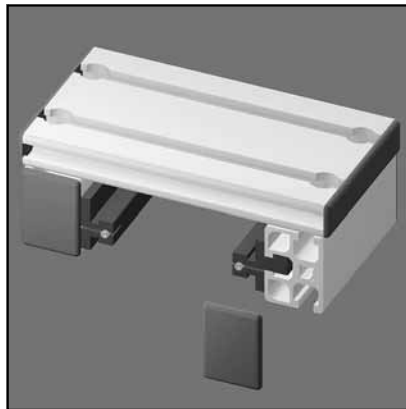
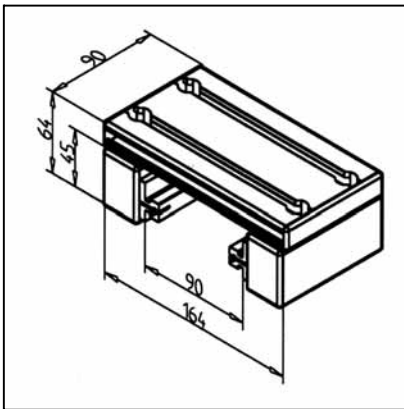
- Simple linear guides
- Automatic advance units

SPECIAL DESIGNS

- With slide clamping unit (Top)
Part N° 28.0192/1
- With slide clamping unit (Lateral)
Part N° 28.0192/2
- Slide plate made of aluminium profile 32 x 180
- Different slide lengths

SLIDE LWN 32 X 45 - 90

Part. N° 28.0193/0



TECHN. DATA / ITEMS SUPPLIED

- Slide completely assembled
- 2 slide rails LN
- End caps
- Clearance adjusted
- Load max. 450 N
- Weight 0,762 kg

APPLICATIONS

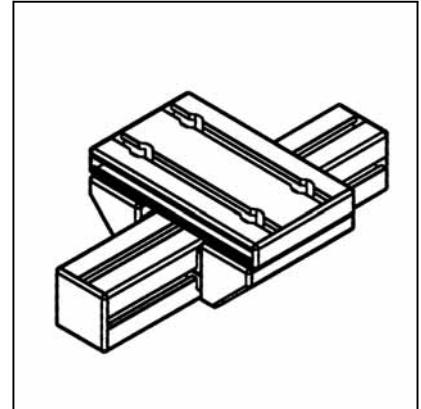
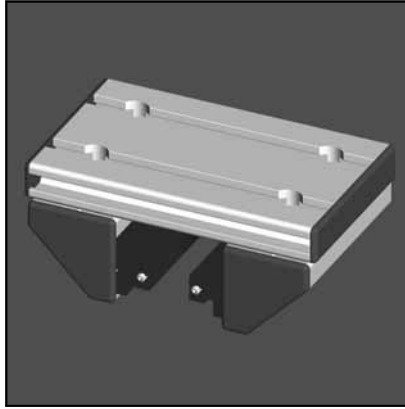
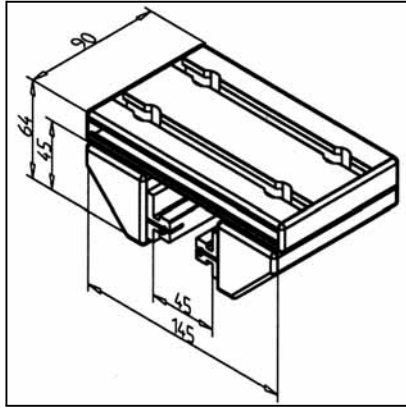
- Simple linear guides
- Automatic advance units

SPECIAL DESIGNS

- With slide clamping unit (Top)
Part N° 28.0193/1
- With slide clamping unit (Lateral)
Part N° 28.0193/2
- Slide plate made of aluminium profile 32 x 180
- Different slide lengths

SLIDE LWN 45/45° - 45

Part. N° 28.0196/0



TECHN. DATA / ITEMS SUPPLIED

- Slide completely assembled
- 2 slide rails LN
- End caps
- Clearance adjusted
- Load max. 450 N
- Weight 0,699 kg

APPLICATIONS

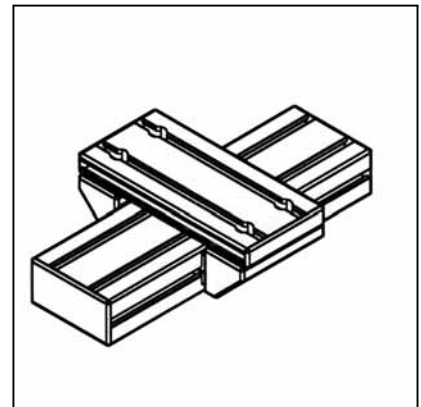
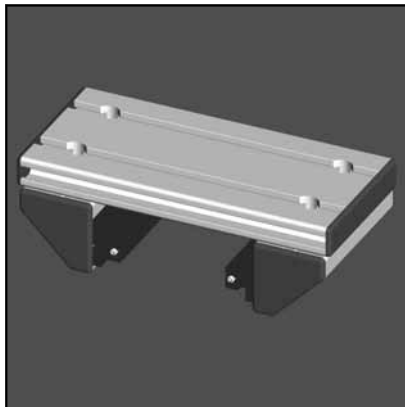
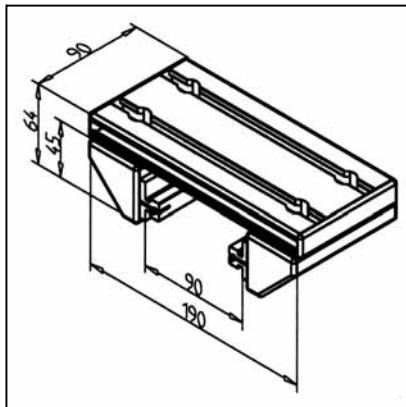
- Simple linear guides
- Automatic advance units

SPECIAL DESIGNS

- With slide clamping unit (Top) Part N° 28.0196/1
- Slide plate made of aluminium profile 32 x 180
- Different slide lengths

SLIDE LWN 45/45° - 90

Part. N° 28.0197/0



TECHN. DATA / ITEMS SUPPLIED

- Slide completely assembled
- 2 slide rails LN
- End caps
- Clearance adjusted
- Load max. 450 N
- Weight 0,782 kg

APPLICATIONS

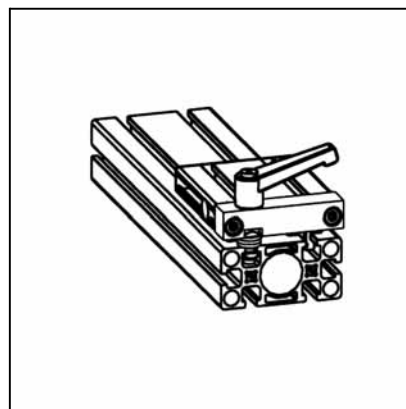
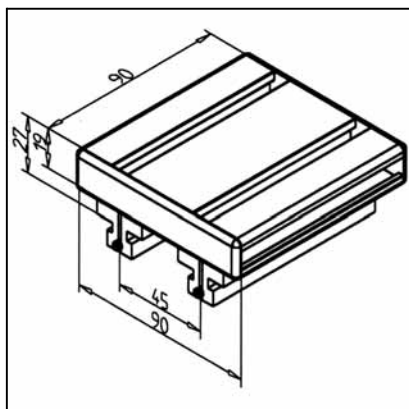
- Simple linear guides
- Automatic advance units

SPECIAL DESIGNS

- With slide clamping unit (Top) Part N° 28.0197/1
- Slide plate made of aluminium profile 32 x 180
- Different slide lengths

SLIDE LWN-S

Part. N° 28.0170/0



TECHN. DATA / ITEMS SUPPLIED

- Slide completely assembled

- 2 slide rails LN

- End caps

- Clearance adjusted

- Load max. 450 N

- Weight 0,261 kg

APPLICATIONS

- Simple linear guides

- Automatic advance units

SPECIAL DESIGNS

- With slide clamping unit (Top)
Part N° 28.0170/1

- Slide plate made of aluminium profile
32 x 180

- Different slide lengths