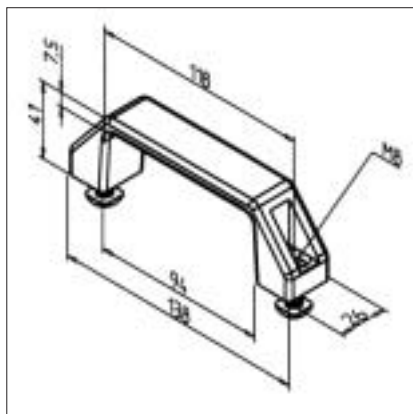


HANDLE 120

Part N° 21.1092/1



TECHN. DATA/ITEMS SUPPLIED

- PA 6.6, grey
 - On request also deliverable in black
 - Fixing kit
- | | |
|--------|----------|
| Weight | 0,074 kg |
|--------|----------|

APPLICATIONS

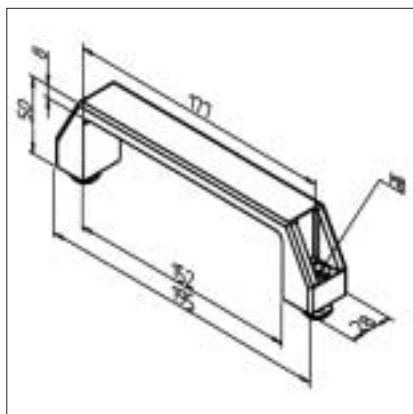
- For doors
- Lids
- Guards

ASSEMBLY

- Use fixing kit from supply schedule
- Directly on panel element with screw M8, length according to material thickness
- Fixing is possible from front or rear

HANDLE 180

Part N° 21.1094/1



TECHN. DATA/ITEMS SUPPLIED

- PA 6.6, grey
 - On request also deliverable in black
 - Fixing kit
- | | |
|--------|----------|
| Weight | 0,099 kg |
|--------|----------|

APPLICATIONS

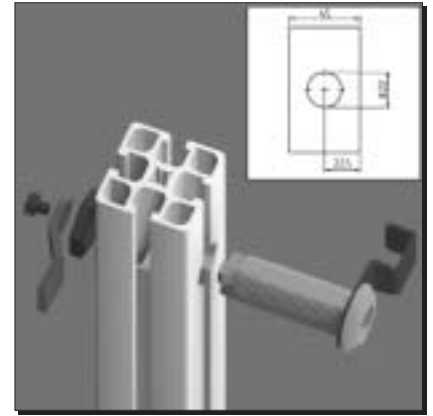
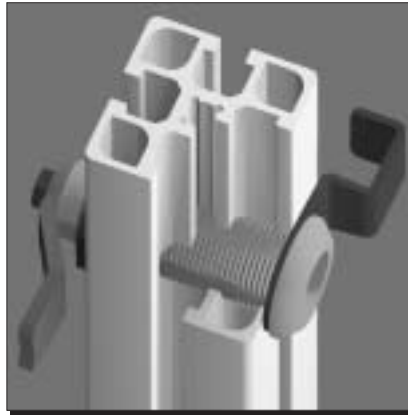
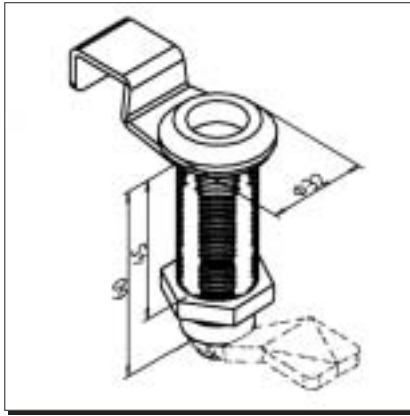
- For doors
- Lids
- Guards

ASSEMBLY

- Use fixing kit from supply schedule
- Directly on panel element with screw M8, length according to material thickness
- Fixing is possible from front or rear

BOLT LOCK 45 SOCKET HEX HEAD WRENCH 10 A/F

Part N° 21.1087/9



TECHN. DATA/ITEMS SUPPLIED

- Housing GD Zn, black
- For socket hex head wrench 10 A/F
- Opener, black
- Fixing nut, steel, zinc-plated
- Without lock

Weight 0,16 kg

APPLICATIONS

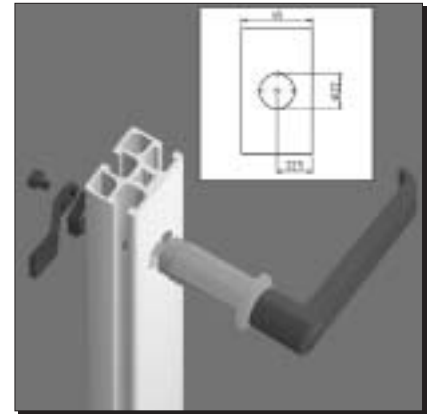
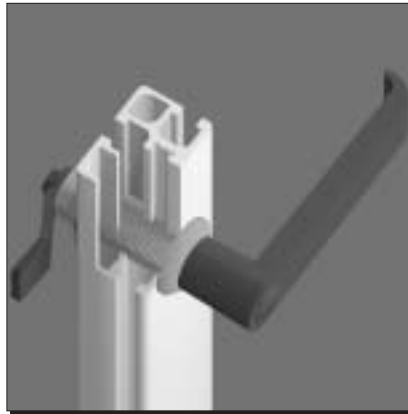
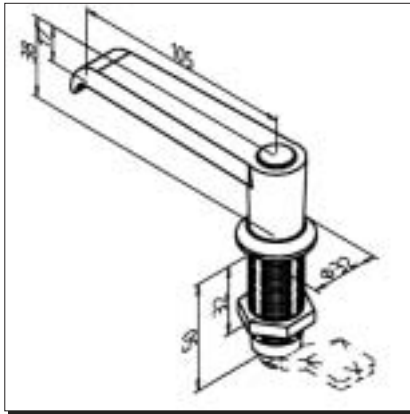
- For profiles 45
- Locking of doors and lids in guard units

ASSEMBLY

- Bore \varnothing 22 mm in the middle of the profile
- Tighten bolt lock from the rear with fixing nut
- Selection of locks see page 112

HANDLE 32 WITHOUT PROFILE CYLINDER LOCK

Part N° 21.1087/4



TECHN. DATA/ITEMS SUPPLIED

- Housing PA/GD Zn, grey
- On request also deliverable in black
- Fixing nut, steel, zinc-plated
- Without lock

Weight 0,170 kg

APPLICATIONS

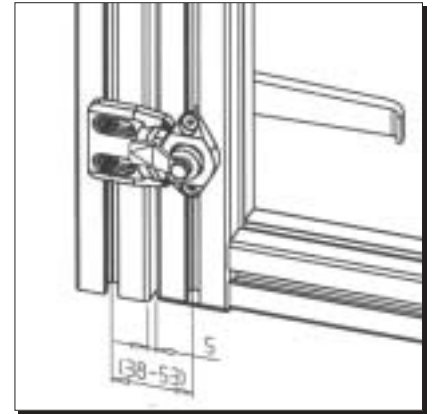
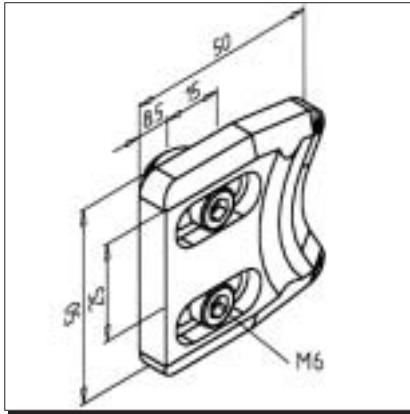
- For profiles 32
- Locking of doors and lids in guard units

ASSEMBLY

- Bore \varnothing 22 mm in the middle of the profile
- Tighten handle from the rear with fixing nut
- Selection of locks see page 112

DOOR STOP S

Part N° 21.1767/0



TECHN. DATA/ITEMS SUPPLIED

- GD Zn, black
 - Fixing kit
- Weight 0,077 kg

APPLICATIONS

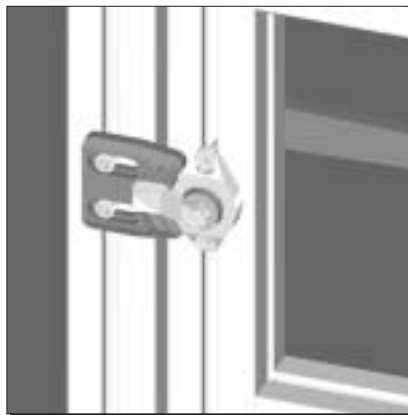
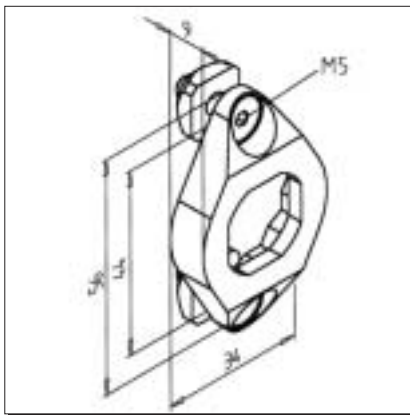
- Adjustable stop for swing-doors
- Especially designed for use in combination with handles, bolt-locks or t-handles
- Precise and strong door stop

ASSEMBLY

- Screw with fixing kit on door-frame

TWIST-STOP

Part N° 21.1768/0



TECHN. DATA/ITEMS SUPPLIED

- GD Zn, black
 - Fixing kit
- Weight 0,040 kg

APPLICATIONS

- Protection of bolt-locks, handles and T-handles against unwanted loosening or overturning
- In particular fitting in combination with Door Stop S Part N° 21.1767/0

ASSEMBLY

- Mount handle or bolt-lock as usual
- Fix Twist-Stop using fixing kit
- Mount lock

ROD LOCK

Items supplied

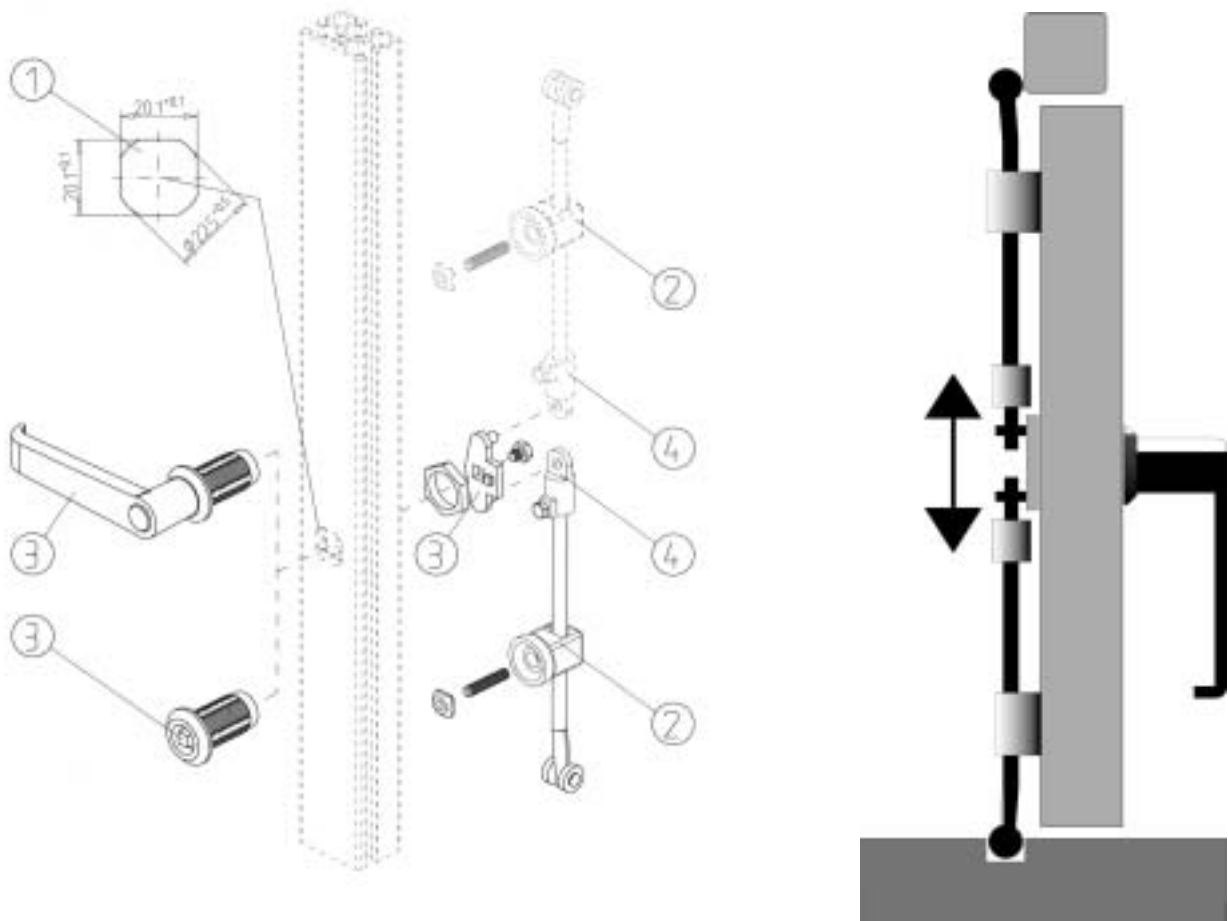
- Bolt lock, steel with square key
- Optional: handle or handle with cylinder lock
- Latch with rod connections, steel, galvanized
- Latch with rollers (l = 1100 mm), steel, galvanized
- Rod guiding element, PA with nut M6

Applications

- For locking doors at upper or lower beam
- Use 2 rods for 2-sided locking
- Order bolt lock, handle without lock or handle with cylinder lock
- Especially suited for control boxes or double-sided doors

Assembly

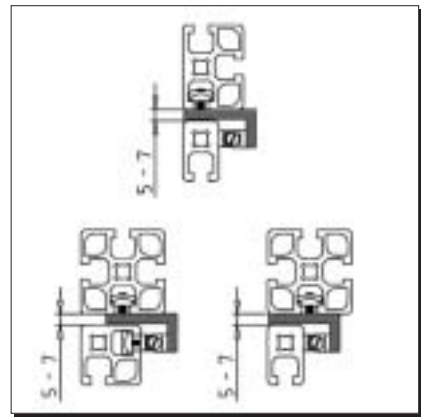
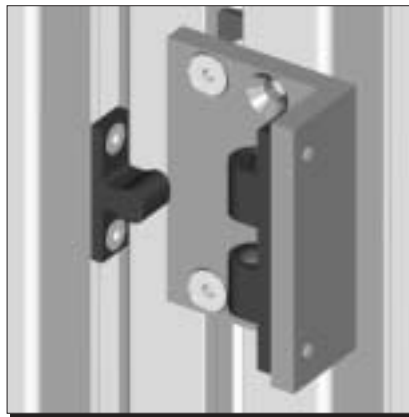
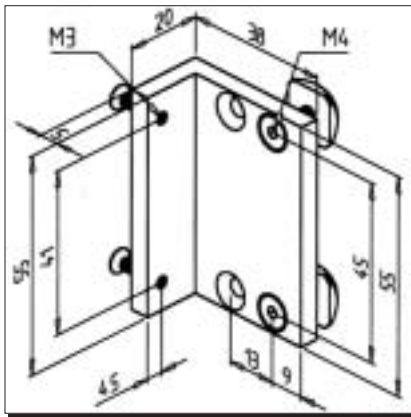
- 1) Mill bore \varnothing 22,5 mm as shown in figure below
- 2) Fix rod guide with set screw M6 x 30 at desired position. No drilling necessary. Screw square nut loose onto set screw. Insert the square nut into the profile groove and twist the plastic part until the guide is fixed.
- 3) Attach bolt lock or handle.
- 4) Insert rod into guiding element and connect with latch.



Profile	Bolt lock		Handle without lock		Handle with cylinder lock	
	1 rod	2 rods	1rod	2 rods	1 rod	2 rods
32 x 45	21.1798/0	21.1798/2	21.1798/3	21.1798/4	21.1798/5	21.1798/6
45 x 45	21.1788/0	21.1788/2	21.1788/3	21.1788/4	21.1788/5	21.1788/6

BALL LATCH SUPPORT 50

Part N° 21.1139/0



TECHN. DATA/ITEMS SUPPLIED

- Aluminium, natural, anodized

- Fixing kit

Weight 0,037 kg

APPLICATIONS

- Attachment of ball latch 50 in doors, lids

- Removable panel elements

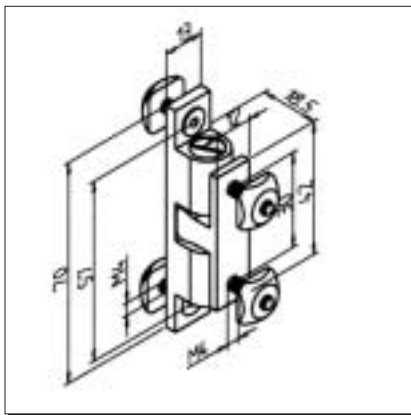
- Door stop

ASSEMBLY

- Use fixing kit from supply schedule

BALL LATCH 70

Part N° 21.1757/0



TECHN. DATA/ITEMS SUPPLIED

- Brass

- Holding force adjustable

- Fixing kit

Weight 0,052 kg

APPLICATIONS

- Quick attachment of easy to remove panel elements

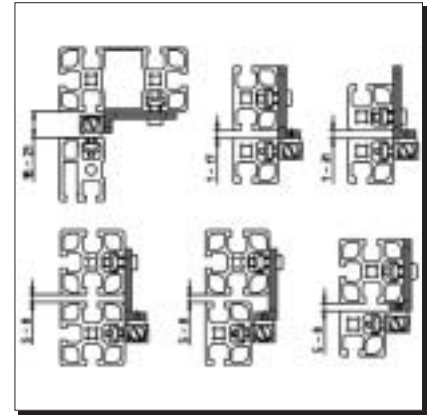
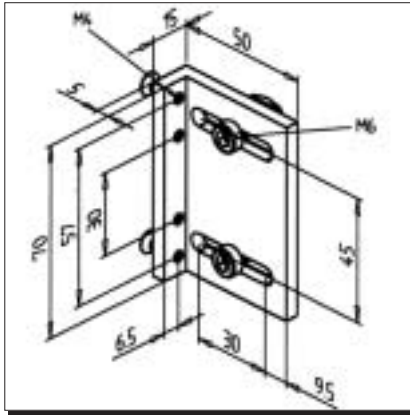
- Stop and catch for sliding doors, swing doors, lids

ASSEMBLY

- Use fixing kit from supply schedule

BALL LATCH SUPPORT 70

Part N° 21.1137/0



TECHN. DATA/ITEMS SUPPLIED

- Aluminium, natural, anodized

- Fixing kit

Weight 0,062 kg

APPLICATIONS

- Attachment of ball latch 70 in doors, lids, removable panel elements

- Door stop

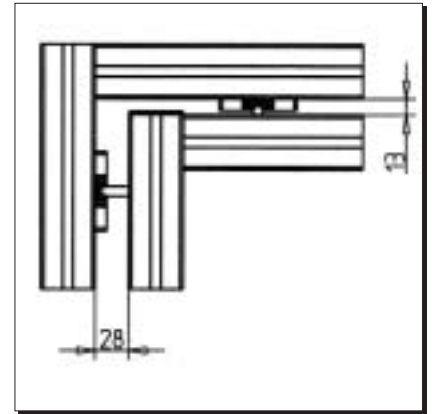
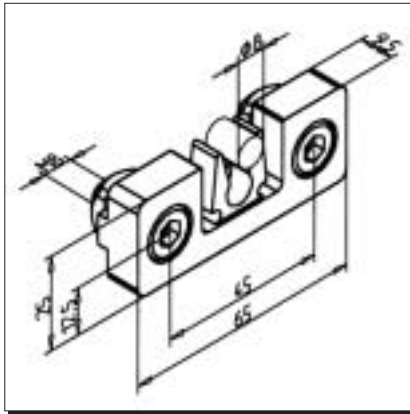
- If using profile 32, ball latch support has to be shortened

ASSEMBLY

- Use fixing kit from supply schedule

DOOR CATCH

Part N° 21.1756/1



TECHN. DATA/ITEMS SUPPLIED

- PA 6, grey

- On request also deliverable in black

- Fixing kit

Weight 0,041 kg

APPLICATIONS

- Quick catch of doors and lids

- Function in connection with snap bolt

- Roller carrier for transport rollers

ASSEMBLY

- Mount on all profiles with fixing kit from supply schedule

- Alternative use of snap bolt 25 or 40

